

## Accessories

### • Seals Kit



contains flange seal and stainless steel bolts

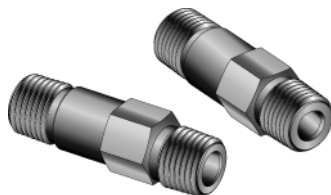
### • Oval Flange kits

(Concentric / Eccentric)

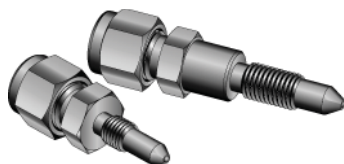


contains oval flanges, seals & bolts

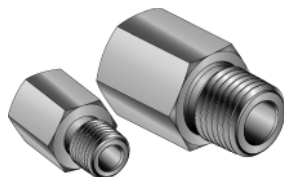
### • Eccentric and Concentric Pipe Nipples



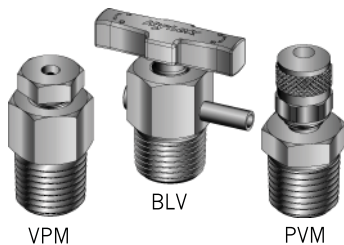
### • Calibration Fittings



### • Gage Adapter



### • Vent plugs, Bleed & Purge Valves



VPM

BLV

PVM

### Kit Ordering Number

Basic Ordering No.	Seal Material	Temperature Range
KIT- *-V	Viton	-20 °F ~ 250 °F (-28 °C ~ 121 °C)
KIT- *-G	Grafoil	-65 °F ~ 1000 °F (65 °C ~ 537 °C)
KIT- *-P	PTFE	-65 °F ~ 450 °F (-53 °C ~ 232 °C)

\* For a complete ordering number, add the desired valve and body shape designator to the basic ordering number. (See index and ordering information) e.g KIT-M3V1F-V (3-Valve, Single flange, viton seals)

Oval flanges used to connect flange to flange manifold.

Standard connection is female NPT 1/2".

The center of eccentric flange is offset 1.6mm(1/16") from the centerline of bolt holes.

They are available in stainless steel only.

Basic Ordering Number

KIT-OCF-8N\* / S316 - Concentric Flange female NPT 1/2"

KIT-OEF-8N\* / S316 - Eccentric Flange female NPT 1/2"

\* For a complete ordering number, add the desired seal material designator to the basic ordering number  
e.g KIT-OCF-8NG / S316

Concentric and Eccentric pipe nipples have 1/2" male NPT and 76mm(3") length.

The ends of eccentric pipe nipples are offset 1.6mm(1/16") from centerline.

They are available in 316 stainless steel and carbon steel.

Basic Ordering Number

H-SCNL-8N / S316 - Concentric pipe nipple male NPT 1/2", Stainless Steel

H-SENL-8N / STEL - Eccentric pipe nipple male NPT 1/2", Carbon Steel

Calibration fittings connect directly to the bleed port of differential pressure transmitter. They are available in 316 stainless steel only.

Basic Ordering Number

CCF4-1U / S316 - Hy-Lok 1/4" - 1/4-28UNF thread

CCF4-2U / S316 - Hy-Lok 1/4" - 5/16-24UNF thread

Gage adapters connect to gage for calibration.

They are available in 316 stainless steel and carbon steel.

Basic Ordering Number

H-MFAH8N-6G-G / S316 - Male NPT 1/2" - Female ISO 228/1 3/8", Stainless steel

H-MFAH-4NG-G / STEL - Male NPT 1/4" - Female ISO 228/1 1/4", Carbon steel

Bleed & Purge valves used to vent to atmosphere and to assist in calibration

They are available in 316 stainless steel only

Basic Ordering Number

VPM - \* / S316 - Vent plug Male NPT Pipe Thread

BLV - \* BT / S316 - Bleed valve Male NPT Pipe Thread

PVM - \* / S316 - Purge valve Male NPT Pipe Thread

\* For a complete ordering number, add the desired size designator 8N(1/2"NPT) or 4N(1/4"NPT)  
e.g VPM - 4N/S316 Vent plug Male 1/4"NPT