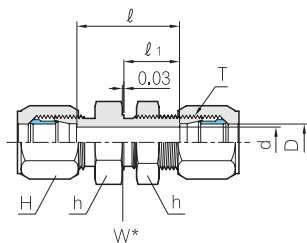
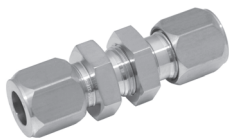


Bulkhead Union

BBU

SAE 080601 MS51812



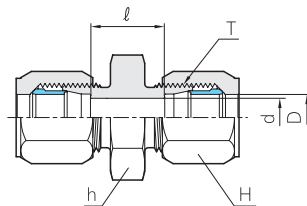
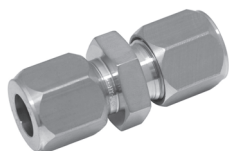
W* - BULKHEAD PILOT DIA.
RECOMMENDED CLEARANCE
HOLE +0.015 OVER W DIA

| Part No. | Tube O.D D (in) | T Straight Thread Size | d | Width across flat | | ℓ | ℓ ₁ | W | Max. Bulkhead Thickness |
|-----------|-----------------|------------------------|------|-------------------|------|------|----------------|------|-------------------------|
| | | | | h | H | | | | |
| BBU - 4T | 1/4 | 7/16 - 20 | 5.2 | 17.4 | 14.2 | 36.1 | 22.5 | 11.2 | 9.7 |
| BBU - 6T | 3/8 | 9/16 - 18 | 7.0 | 20.6 | 17.4 | 37.6 | 23.4 | 14.2 | 10.2 |
| BBU - 8T | 1/2 | 3/4 - 16 | 10.7 | 25.4 | 22.2 | 40.9 | 25.6 | 19.1 | 10.2 |
| BBU - 10T | 5/8 | 7/8 - 14 | 12.7 | 28.5 | 25.4 | 45.2 | 27.9 | 22.4 | 9.4 |
| BBU - 12T | 3/4 | 1 1/16 - 12 | 16.6 | 34.9 | 31.7 | 51.3 | 30.7 | 26.9 | 10.9 |
| BBU - 16T | 1 | 1 5/16 - 12 | 22.2 | 41.2 | 38.1 | 48.0 | 29.1 | 33.3 | 10.9 |

Large Hex Union

BUH

SAE 080119 MS51856



| Part No. | Tube O.D D (in) | T Straight Thread Size | d | Width across flat | | ℓ |
|-----------|-----------------|------------------------|------|-------------------|------|------|
| | | | | h | H | |
| BUH - 4T | 1/4 | 7/16 - 20 | 5.2 | 17.4 | 14.2 | 18.1 |
| BUH - 6T | 3/8 | 9/16 - 18 | 7.0 | 20.6 | 17.4 | 18.8 |
| BUH - 8T | 1/2 | 3/4 - 16 | 10.7 | 25.4 | 22.2 | 20.6 |
| BUH - 10T | 5/8 | 7/8 - 14 | 12.7 | 28.5 | 25.4 | 23.1 |
| BUH - 12T | 3/4 | 1 1/16 - 12 | 16.6 | 34.9 | 31.7 | 28.2 |
| BUH - 16T | 1 | 1 5/16 - 12 | 22.2 | 41.2 | 34.9 | 24.9 |

All dimensions are in millimeters unless otherwise specified. Dimensions are for reference only, subject to change.