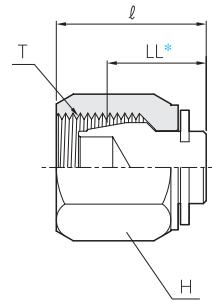
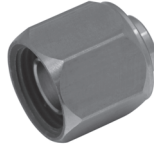


SAE J514 Flareless Tube Fittings

Plug

BP

SAE 080112 MS51890



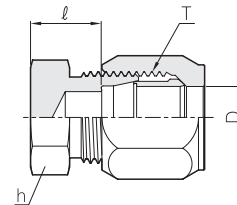
LL* - Fitting end to Rear of Plug

Part No.	Tube O.D D (in)	T Straight Thread Size	Width across flat		LL	l
			H			
BP - 2T	1/8	5/16 - 24	9.5		8.6	14.0
BP - 4T	1/4	7/16 - 20	14.2		9.1	18.5
BP - 5T	5/16	1/2 - 20	15.8		10.2	19.6
BP - 6T	3/8	9/16 - 18	17.4		10.7	20.3
BP - 8T	1/2	3/4 - 16	22.2		11.2	22.1
BP - 10T	5/8	7/8 - 14	25.4		11.9	24.9
BP - 12T	3/4	1 1/16 - 12	31.7		12.2	25.4
BP - 16T	1	1 5/16 - 12	38.1		14.7	27.4
BP - 20T	1 1/4	1 5/8 - 12	50.0		16.3	28.2

Cap

BCA

SAE 080109 MS51891



Part No.	Tube O.D D (in)	T Straight Thread Size	Width across flat		l
			h		
BCA - 2T	1/8	5/16 - 24	11.1		11.2
BCA - 4T	1/4	7/16 - 20	12.7		12.1
BCA - 5T	5/16	1/2 - 20	14.2		11.7
BCA - 6T	3/8	9/16 - 18	15.8		12.7
BCA - 8T	1/2	3/4 - 16	20.6		13.9
BCA - 10T	5/8	7/8 - 14	23.8		15.7
BCA - 12T	3/4	1 1/16 - 12	28.5		19.0
BCA - 16T	1	1 5/16 - 12	34.9		17.4

All dimensions are in millimeters unless otherwise specified. Dimensions are for reference only, subject to change.