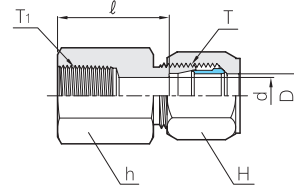
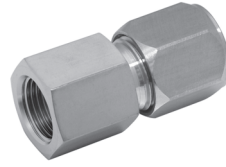


SAE J514 Flareless Tube Fittings

Female Connector

BFC

SAE 080103 MS51816



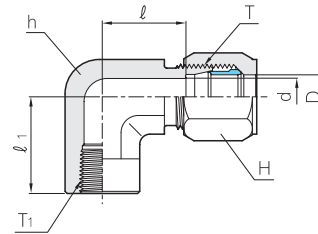
Part No.	Tube O.D D (in)	T Straight Thread Size	T ₁ * NPT Size	d	Width across flat		ℓ
					h	H	
BFC 2T - 01N	1/8	5/16 - 24	1/8	2.4	14.2	9.5	21.9
BFC 4T - 01N	1/4	7/16 - 20	1/8	5.2	14.2	14.2	21.8
BFC 4T - 02N	1/4	7/16 - 20	1/4	5.2	19.1	14.2	26.7
BFC 5T - 01N	5/16	1/2 - 20	1/8	6.0	14.2	15.8	21.1
BFC 6T - 02N	3/8	9/16 - 18	1/4	7.0	19.1	17.4	27.0
BFC 6T - 03N	3/8	9/16 - 18	3/8	7.0	22.2	17.4	27.7
BFC 6T - 04N	3/8	9/16 - 18	1/2	7.0	28.5	17.4	34.0
BFC 8T - 02N	1/2	3/4 - 16	1/4	10.7	22.2	22.2	29.3
BFC 8T - 03N	1/2	3/4 - 16	3/8	10.7	22.2	22.2	29.6
BFC 8T - 04N	1/2	3/4 - 16	1/2	10.7	28.5	22.2	35.2
BFC 10T - 04N	5/8	7/8 - 14	1/2	12.7	28.5	25.4	35.8
BFC 12T - 06N	3/4	1 1/16 - 12	3/4	16.6	34.9	31.7	39.1
BFC 14T - 06N	7/8	1 3/16 - 12	3/4	18.0	34.9	34.9	38.3
BFC 16T - 08N	1	1 5/16 - 12	1	22.2	41.2	38.1	43.6
BFC 20T - 10N	1 1/4	1 5/8 - 12	1 1/4	27.8	50.0	50.0	45.9
BFC 24T - 12N	1 1/2	1 7/8 - 12	1 1/2	34.1	60.0	57.2	44.3

* ISO Tapered Threads are available upon request.

Female Elbow

BLF

SAE 080203 MS51813



Part No.	Tube O.D D (in)	T Straight Thread Size	T ₁ * NPT Size	d	Width across flat		ℓ	ℓ ₁
					h	H		
BLF 4T - 01N	1/4	7/16 - 20	1/8	5.2	14.2	14.2	16.7	16.8
BLF 4T - 02N	1/4	7/16 - 20	1/4	5.2	19.1	14.2	20.2	22.4
BLF 5T - 01N	5/16	1/2 - 20	1/8	6.0	14.2	15.8	17.8	16.8
BLF 6T - 02N	3/8	9/16 - 18	1/4	7.0	19.1	17.4	20.4	22.4
BLF 6T - 03N	3/8	9/16 - 18	3/8	7.0	22.2	17.4	22.4	25.9
BLF 8T - 02N	1/2	3/4 - 16	1/4	10.7	19.1	22.2	23.5	22.4
BLF 8T - 03N	1/2	3/4 - 16	3/8	10.7	22.2	22.2	23.5	25.9
BLF 8T - 04N	1/2	3/4 - 16	1/2	10.7	27.0	22.2	26.3	31.2
BLF 10T - 04N	5/8	7/8 - 14	1/2	12.7	27.0	25.4	27.2	31.2
BLF 12T - 06N	3/4	1 1/16 - 12	3/4	16.6	33.3	31.7	31.2	34.5
BLF 14T - 06N	7/8	1 3/16 - 12	3/4	18.0	33.3	34.9	32.2	36.1
BLF 16T - 08N	1	1 5/16 - 12	1	22.2	41.2	38.1	33.4	41.1
BLF 20T - 10N	1 1/4	1 5/8 - 12	1 1/4	27.8	47.6	50.0	42.3	43.2
BLF 24T - 12N	1 1/2	1 7/8 - 12	1 1/2	34.1	63.5	57.2	53.2	52.8

* ISO Tapered Threads are available upon request.

All dimensions are in millimeters unless otherwise specified. Dimensions are for reference only, subject to change.