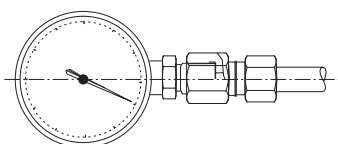
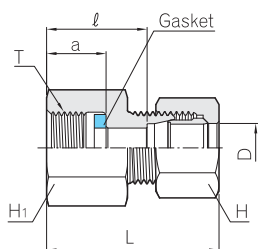
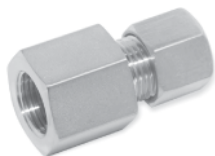


Gauge Connector

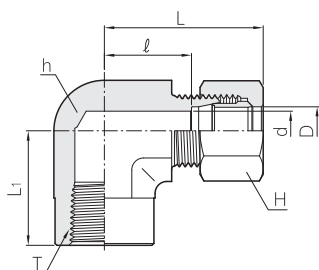
BGC



Part No.	Tube O.D. D	(PF) T	a	Width across flat		l	Approx. L	Gasket part No
				H	H ₁			
BGC 04 - 02G	4	1/4	14	12	19	23	36.5	- 01
BGC 04 - 03G	4	3/8	15	12	24	24	37.5	- 02
BGC 06 - 02G	6	1/4	14	14	19	25	42.5	- 01
BGC 06 - 03G	6	3/8	15	14	24	27	44.5	- 02
BGC 06 - 04G	6	1/2	16	14	30	29	46.5	- 03
BGC 08 - 02G	8	1/4	14	17	19	25	42.5	- 01
BGC 08 - 03G	8	3/8	15	17	24	27	44.5	- 02
BGC 08 - 04G	8	1/2	16	17	30	29	46.5	- 03
BGC 10 - 02G	10	1/4	14	19	19	25	43.5	- 01
BGC 10 - 03G	10	3/8	15	19	24	27	45.5	- 02
BGC 10 - 04G	10	1/2	16	19	30	29	47.5	- 03
BGC 12 - 02G	12	1/4	14	22	19	25	43.5	- 01
BGC 12 - 03G	12	3/8	15	22	24	27	45.5	- 02
BGC 12 - 04G	12	1/2	16	22	30	29	47.5	- 03

Female Elbow

BLF



Part No.	Tube O.D. D	(PF) T	d	Width across flat		l	Approx.	
				h	H		L	L ₁
BLF 08 - 02R	8	1/4	6	19	17	17.0	34.5	24
BLF 10 - 02R	10	1/4	8	19	19	17.0	35.5	24
BLF 12 - 02R	12	1/4	10	19	22	17.0	35.5	24
BLF 12 - 03R	12	3/8	10	24	22	22.0	40.5	29
BLF 15 - 03R	15	3/8	12	24	27	21.5	41.5	29
BLF 15 - 04R	15	1/2	12	30	27	25.5	45.5	33
BLF 16 - 04R	16	1/2	13	30	30	25.5	45.5	33
BLF 18 - 04R	18	1/2	14	30	32	25.0	45.5	33
BLF 20 - 06R	20	3/4	17	36	36	28.0	48.5	36
BLF 22 - 06R	22	3/4	18	36	36	27.0	48.5	36
BLF 25 - 06R	25	3/4	20	36	41	26.0	49.5	36
BLF 25 - 08R	25	1	20	46	41	36.0	59.5	46
BLF 28 - 08R	28	1	22	46	46	36.0	60.0	46
BLF 30 - 10R	30	1 1/4	25	55	46	45.0	69.5	55
BLF 32 - 10R	32	1 1/4	26	55	50	44.0	69.5	55
BLF 35 - 10R	35	1 1/4	28	55	55	44.0	72.5	55

All dimensions are in millimeters. Dimensions are for reference only, subject to change.