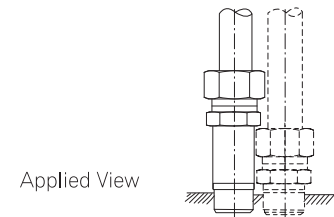
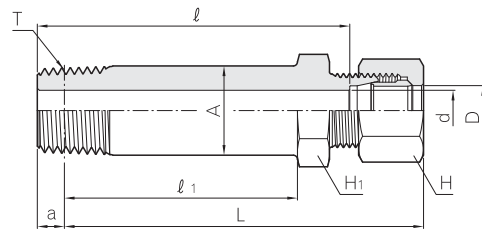


Long Male Connector BLMC



Part No.	Tube O.D.		(PT) T	d	Basic gauge length a	Width across flat		A	l	l ₁	Approx. L
	D					H ₁	H				
BLMC 04 - 01R	4		1/8	2.5	3.97	12	12	10.5	40.0	30.0	49.5
BLMC 06 - 01R	6		1/8	4.0	3.97	14	14	10.5	59.0	41.0	69.5
BLMC 08 - 02R	8		1/4	6.0	6.01	17	17	14.0	63.0	45.0	74.5
BLMC 10 - 02R	10		1/4	7.0	6.01	17	19	14.0	64.0	46.0	76.5
BLMC 10 - 03R	10		3/8	8.0	6.35	19	19	17.5	65.0	46.5	77.0
BLMC 12 - 02R	12		1/4	7.0	6.01	19	22	14.0	64.0	46.0	76.5
BLMC 12 - 03R	12		3/8	9.0	6.35	19	22	17.5	65.0	46.5	77.0
BLMC 15 - 03R	15		3/8	9.0	6.35	24	27	17.5	73.5	52.5	87.0
BLMC 15 - 04R	15		1/2	12.0	8.16	24	27	22.0	78.5	56.0	90.5
BLMC 16 - 04R	16		1/2	12.0	8.16	27	30	22.0	78.5	56.0	90.5
BLMC 18 - 04R	18		1/2	12.0	8.16	27	32	22.0	81.0	56.0	90.5
BLMC 20 - 06R	20		3/4	16.0	9.53	30	36	27.5	84.0	58.5	95.0
BLMC 22 - 06R	22		3/4	16.0	9.53	32	36	27.5	84.0	59.5	96.0
BLMC 25 - 08R	25		1	20.0	10.39	36	41	34.0	89.0	63.5	102.0
BLMC 28 - 08R	28		1	22.0	10.39	41	46	34.0	94.0	66.5	107.5
BLMC 30 - 10R	30		1 1/4	25.0	12.70	46	46	42.5	99.0	68.5	111.0
BLMC 32 - 10R	32		1 1/4	26.0	12.70	46	60	42.5	99.0	69.5	112.0
BLMC 81 - 02R	1/8	10.5	1/4	7.0	6.01	17	19	14.0	64.0	46.0	76.5
BLMC 82 - 03R	1/4	13.8	3/8	9.0	6.35	22	24	17.5	73.5	52.5	86.5
BLMC 82 - 03R	3/8	17.3	3/8	9.0	6.35	27	32	17.5	73.0	52.5	87.0
BLMC 83 - 04R	3/8	17.3	1/2	12.0	8.16	27	32	22.0	78.0	56.0	90.5
BLMC 84 - 06R	1/2	21.7	3/4	16.0	9.53	32	36	27.5	84.0	59.5	96.0
BLMC 85 - 08R	3/4	27.2	1	22.0	10.39	41	46	34.0	94.0	66.5	107.5

All dimensions are in millimeters. Dimensions are for reference only, subject to change.