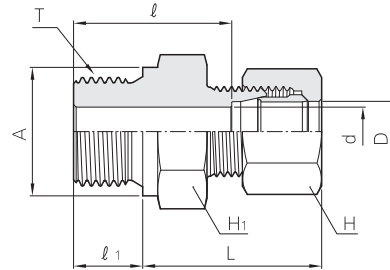
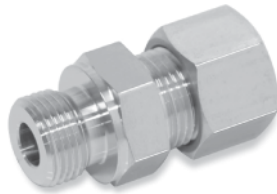


Tube Fittings

Male Connector (For Copper Gasket)

BMC - G



Part No.	Tube O.D.		(PT) T	d	Width across flat		A	l ₁	l	Approx. L
	D				H ₁	H				
BMC 04 - 01G		4	1/8	2.5	14	12	14.0	8	17.0	22.5
BMC 06 - 01G		6	1/8	4.0	14	14	14.0	8	21.0	30.5
BMC 06 - 02G		6	1/4	4.0	19	14	18.0	12	26.0	31.5
BMC 08 - 01G		8	1/8	4.0	17	17	14.0	8	21.0	30.5
BMC 08 - 02G		8	1/4	6.0	19	17	18.0	12	26.0	31.5
BMC 10 - 02G		10	1/4	6.0	19	19	18.0	12	26.0	32.5
BMC 10 - 03G		10	3/8	8.0	22	19	21.5	12	27.0	33.5
BMC 12 - 02G		12	1/4	6.0	19	22	18.0	12	26.0	32.5
BMC 12 - 03G		12	3/8	8.0	22	22	21.5	12	27.0	33.5
BMC 12 - 04G		12	1/2	10.0	27	22	25.5	14	32.0	36.5
BMC 15 - 03G		15	3/8	8.0	24	27	21.5	12	29.5	37.5
BMC 15 - 03G		15	1/2	12.0	27	27	25.5	14	33.5	39.5
BMC 15 - 04G		16	1/2	12.0	27	30	25.5	14	33.5	39.5
BMC 18 - 04G		18	1/2	12.0	27	32	25.5	14	33.0	39.5
BMC 20 - 06G		20	3/4	16.0	32	36	31.5	16	38.0	42.5
BMC 22 - 04G		22	1/2	12.0	32	36	25.5	14	34.0	41.5
BMC 22 - 06G		22	3/4	16.0	32	36	31.5	16	37.0	42.5
BMC 25 - 06G		25	3/4	16.0	36	41	31.5	16	36.0	43.5
BMC 25 - 08G		25	1	20.0	41	41	38.0	18	40.0	45.5
BMC 28 - 08G		28	1	22.0	41	46	38.0	18	42.0	48.0
BMC 30 - 08G		30	1	22.0	41	46	38.0	18	42.0	48.5
BMC 30 - 10G		30	1 1/4	25.0	50	46	48.5	20	47.0	51.5
BMC 32 - 10G		32	1 1/4	26.0	50	50	48.5	20	46.0	51.5
BMC 35 - 10G		35	1 1/4	28.0	50	55	48.5	20	46.0	54.5
BMC 38 - 12G		38	1 1/2	32.0	55	60	53.5	21	46.0	56.5
BMC 40 - 12G		40	1 1/2	32.0	55	60	53.5	21	50.0	60.5
BMC 42 - 12G		42	1 1/2	34.0	55	60	53.5	21	50.0	60.5
BMC 50 - 16G		50	2	40.0	70	75	66.0	25	61.0	69.5
BMC 81 - 01G	1/8	10.5	1/8	4.0	17	19	14.0	8	22.0	32.5
BMC 81 - 02G	1/8	10.5	1/4	6.0	19	19	18.0	12	26.0	32.5
BMC 82 - 02G	1/4	13.8	1/4	6.0	22	24	18.0	12	28.5	36.0
BMC 82 - 03G	1/4	13.8	3/8	8.0	22	24	21.5	12	28.5	36.0
BMC 83 - 03G	3/8	17.3	3/8	8.0	27	32	21.5	12	30.0	38.5
BMC 83 - 04G	3/8	17.3	1/2	12.0	27	32	25.5	14	33.0	39.5
BMC 84 - 04G	1/2	21.7	1/2	12.0	32	36	25.5	14	34.0	41.5
BMC 84 - 06G	1/2	21.7	3/4	16.0	32	36	31.5	16	37.0	42.5
BMC 85 - 06G	3/4	27.2	3/4	16.0	41	46	31.5	16	40.0	48.0
BMC 85 - 08G	3/4	27.2	1	22.0	41	46	38.0	18	42.0	48.0
BMC 86 - 08G	1	34.0	1	22.0	46	55	38.0	18	43.0	53.5
BMC 86 - 10G	1	34.0	1 1/4	28.0	50	55	48.5	20	46.0	54.5
BMC 87 - 10G	1 1/4	42.7	1 1/4	31.0	60	65	48.5	20	51.0	63.5
BMC 87 - 12G	1 1/4	42.7	1 1/2	34.0	60	65	53.5	21	52.0	63.5
BMC 88 - 12G	1 1/2	48.6	1 1/2	36.0	65	75	53.5	21	53.0	65.5
BMC 88 - 16G	1 1/2	48.6	2	40.0	70	75	66.0	25	61.0	69.5

All dimensions are in millimeters. Dimensions are for reference only, subject to change.