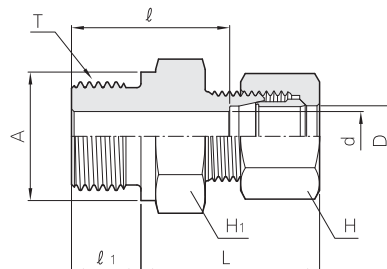


Male Connector (For O - Seal)

BOM



Part No.	Tube O.D.		(PT) T	d	Width across flat		A	l ₁	l	Approx. L
	D				H ₁	H				
BOM 04 - 01G	4		1/8	2.5	14	12	14	8	17.0	22.5
BOM 06 - 01G	6		1/8	4.0	14	14	14	8	21.0	30.5
BOM 06 - 02G	6		1/4	4.0	19	14	19	12	26.0	31.5
BOM 08 - 01G	8		1/8	4.0	17	17	14	8	21.0	30.5
BOM 08 - 02G	8		1/4	6.0	19	17	19	12	26.0	31.5
BOM 10 - 02G	10		1/4	6.0	19	19	19	12	26.0	32.5
BOM 10 - 03G	10		3/8	8.0	22	19	22	12	27.0	33.5
BOM 12 - 02G	12		1/4	6.0	19	22	19	12	26.0	32.5
BOM 12 - 03G	12		3/8	8.0	22	22	22	12	27.0	33.5
BOM 12 - 04G	12		1/2	10.0	27	22	27	14	32.0	36.5
BOM 15 - 03G	15		3/8	8.0	24	27	22	12	29.5	37.5
BOM 15 - 04G	15		1/2	12.0	27	27	27	14	33.5	39.5
BOM 16 - 04G	16		1/2	12.0	27	30	27	14	33.5	39.5
BOM 18 - 04G	18		1/2	12.0	27	32	27	14	33.0	39.5
BOM 20 - 06G	20		3/4	16.0	36	36	36	16	38.0	42.5
BOM 22 - 04G	22		1/2	12.0	32	36	27	14	34.0	41.5
BOM 22 - 06G	22		3/4	16.0	36	36	36	16	37.0	42.5
BOM 25 - 06G	25		3/4	16.0	36	41	36	16	36.0	43.5
BOM 25 - 08G	25		1	20.0	41	41	41	18	40.0	45.5
BOM 28 - 08G	28		1	22.0	41	46	41	18	42.0	48.0
BOM 30 - 08G	30		1	22.0	41	46	41	18	42.0	48.5
BOM 30 - 10G	30		1 1/4	25.0	50	46	50	20	47.0	51.5
BOM 32 - 10G	32		1 1/4	26.0	50	50	50	20	46.0	51.5
BOM 35 - 10G	35		1 1/4	28.0	50	55	50	20	46.0	54.5
BOM 38 - 12G	38		1 1/2	32.0	55	60	55	21	46.0	56.5
BOM 40 - 12G	40		1 1/2	32.0	55	60	55	21	50.0	60.5
BOM 42 - 12G	42		1 1/2	34.0	55	60	55	21	50.0	60.5
BOM 50 - 16G	50		2	40.0	70	75	75	25	61.0	69.5
BOM 81 - 01G	1/8	10.5	1/8	4.0	17	19	14	8	22.0	32.5
BOM 81 - 02G	1/8	10.5	1/4	6.0	19	19	19	12	26.0	32.5
BOM 82 - 02G	1/4	13.8	1/4	6.0	22	24	19	12	28.5	36.0
BOM 82 - 03G	1/4	13.8	3/8	8.0	22	24	22	12	28.5	36.0
BOM 83 - 03G	3/8	17.3	3/8	8.0	27	32	22	12	30.0	38.5
BOM 83 - 04G	3/8	17.3	1/2	12.0	27	32	27	14	33.0	39.5
BOM 84 - 04G	1/2	21.7	1/2	12.0	32	36	27	14	34.0	41.5
BOM 84 - 06G	1/2	21.7	3/4	16.0	36	36	36	16	37.0	42.5
BOM 85 - 06G	3/4	27.2	3/4	16.0	41	46	36	16	40.0	48.0
BOM 85 - 08G	3/4	27.2	1	22.0	41	46	41	18	42.0	48.0
BOM 86 - 08G	1	34.0	1	22.0	46	55	41	18	43.0	53.5
BOM 86 - 10G	1	34.0	1 1/4	28.0	50	55	50	20	46.0	54.5
BOM 87 - 10G	1 1/4	42.7	1 1/4	31.0	60	65	50	20	51.0	63.5
BOM 87 - 12G	1 1/4	42.7	1 1/2	34.0	60	65	55	21	52.0	63.5
BOM 88 - 12G	1 1/2	48.6	1 1/2	36.0	65	75	55	21	53.0	65.5
BOM 88 - 16G	1 1/2	48.6	2	40.0	75	75	75	25	73.0	69.5

All dimensions are in millimeters. Dimensions are for reference only, subject to change.