

## Tube Fittings

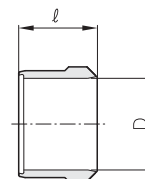
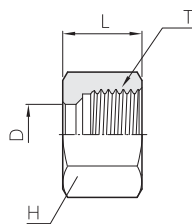
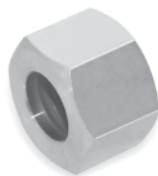
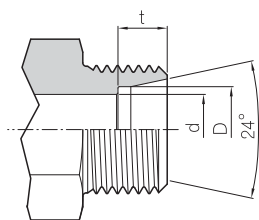
Tube end Dimensions

Nut

**BN**

Sleeve

**BS**



Part No.	Part No.	Tube O.D. D		d	t	T	L	ℓ	Width across flat H
BN - 04	BS - 04	4		2.5	6.0	M10 X 1.25	10.5	7	12
BN - 06	BS - 06	6		4.0	7.0	M12 X 1.5	15.0	9	14
BN - 08	BS - 08	8		6.0	7.0	M14 X 1.5	15.0	9	17
BN - 10	BS - 10	10		8.0	7.0	M16 X 1.5	16.0	10	19
BN - 12	BS - 12	12		10.0	7.0	M18 X 1.5	16.0	10	22
BN - 15	BS - 15	15		12.0	7.5	M22 X 1.5	17.5	10	27
BN - 16	BS - 16	16		13.0	7.5	M24 X 1.5	19.0	10	30
BN - 18	BS - 18	18		14.0	8.0	M26 X 1.5	18.0	10	32
BN - 20	BS - 20	20		17.0	8.0	M28 X 1.5	19.0	10	36
BN - 22	BS - 22	22		18.0	9.0	M30 X 1.5	19.0	10	36
BN - 25	BS - 25	25		20.0	10.0	M35 X 1.5	20.0	11	41
BN - 28	BS - 28	28		22.0	10.0	M38 X 1.5	21.0	11	46
BN - 30	BS - 30	30		25.0	10.0	M40 X 1.5	22.0	11	46
BN - 32	BS - 32	32		26.0	11.0	M42 X 1.5	22.0	11	50
BN - 35	BS - 35	35		28.0	11.0	M45 X 1.5	25.0	14	50
BN - 38	BS - 38	38		32.0	12.0	M48 X 1.5	27.0	14	60
BN - 40	BS - 40	40		32.0	12.0	M52 X 2.0	29.5	14	60
BN - 42	BS - 42	42		34.0	12.0	M52 X 2.0	29.5	14	60
BN - 50	BS - 50	50		40.0	12.0	M64 X 2.0	31.5	14	75
BN - 81	BS - 81	1/8	10.5	8.0	7.0	M16 X 1.5	16.0	10	19
BN - 82	BS - 82	1/4	13.8	11.0	7.5	M20 X 1.5	18.0	10	24
BN - 83	BS - 83	3/8	17.3	14.0	8.0	M26 X 1.5	19.0	10	32
BN - 84	BS - 84	1/2	21.7	18.0	9.0	M30 X 1.5	19.0	10	36
BN - 85	BS - 85	3/4	27.2	22.0	10.0	M38 X 1.5	21.0	11	46
BN - 86	BS - 86	1	34.0	28.0	11.0	M45 X 1.5	25.0	14	55
BN - 87	BS - 87	1 1/4	42.7	34.0	12.0	M56 X 2.0	30.5	14	65
BN - 88	BS - 88	1 1/2	48.6	40.0	12.0	M64 X 2.0	31.5	14	75

All dimensions are in millimeters. Dimensions are for reference only, subject to change.