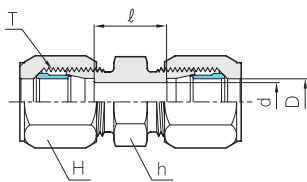
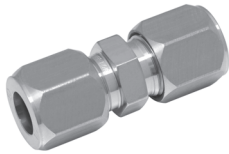


Union

BU

SAE 080101 MS51814

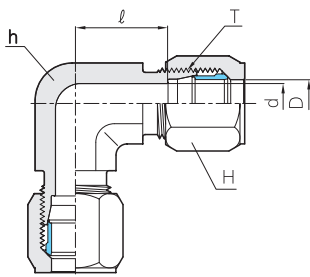


Part No.	Tube O.D D (in)	T Straight Thread Size	d	Width across flat		ℓ
				h	H	
BU - 2T	1/8	5/16 - 24	2.4	11.1	9.5	16.3
BU - 3T	3/16	3/8 - 24	3.2	11.1	11.1	16.3
BU - 4T	1/4	7/16 - 20	5.2	12.7	14.2	18.1
BU - 5T	5/16	1/2 - 20	6.0	14.2	15.8	17.3
BU - 6T	3/8	9/16 - 18	7.0	15.8	17.4	18.8
BU - 8T	1/2	3/4 - 16	10.7	20.6	22.2	20.6
BU - 10T	5/8	7/8 - 14	12.7	23.8	25.4	23.1
BU - 12T	3/4	1 1/16 - 12	16.6	28.5	31.7	28.2
BU - 14T	7/8	1 3/16 - 12	18.0	31.7	34.9	28.2
BU - 16T	1	1 5/16 - 12	22.2	34.9	38.1	24.9
BU - 20T	1 1/4	1 5/8 - 12	27.8	42.9	50.0	26.9
BU - 24T	1 1/2	1 7/8 - 12	34.1	50.0	57.2	25.2
BU - 32T	2	2 1/2 - 12	46.0	65.0	75.0	29.0

Union Elbow

BL

SAE 080201 MS51820



Part No.	Tube O.D D (in)	T Straight Thread Size	d	Width across flat		ℓ
				h	H	
BL - 2T	1/8	5/16 - 24	2.4	11.1	9.5	14.8
BL - 3T	3/16	3/8 - 24	3.2	11.1	11.1	15.2
BL - 4T	1/4	7/16 - 20	5.2	11.1	14.2	16.7
BL - 5T	5/16	1/2 - 20	6.0	14.2	15.8	17.8
BL - 6T	3/8	9/16 - 18	7.0	14.2	17.4	20.4
BL - 8T	1/2	3/4 - 16	10.7	19.1	22.2	24.1
BL - 10T	5/8	7/8 - 14	12.7	22.2	25.4	27.2
BL - 12T	3/4	1 1/16 - 12	16.6	26.9	31.7	31.2
BL - 14T	7/8	1 3/16 - 12	18.0	33.3	34.9	33.3
BL - 16T	1	1 5/16 - 12	22.2	33.3	38.1	33.4
BL - 20T	1 1/4	1 5/8 - 12	27.8	41.0	50.0	37.5
BL - 24T	1 1/2	1 7/8 - 12	34.1	47.6	57.2	39.0
BL - 32T	2	2 1/2 - 12	46.1	63.5	75.0	49.9

All dimensions are in millimeters unless otherwise specified. Dimensions are for reference only, subject to change.