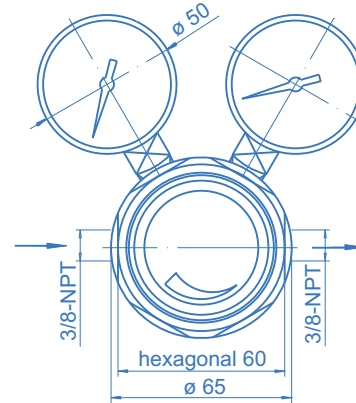


Line pressure regulator LE71



Pressure regulator LE71

Dimensions



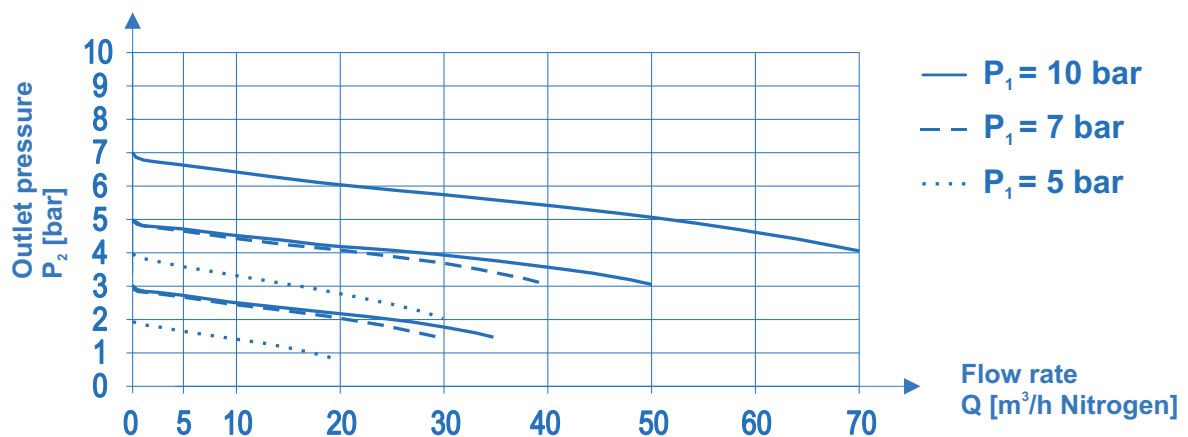
Product features

- Single-stage pressure regulator for corrosive gases and gas mixtures up to quality 6.0
- New laboratory style design
- High control accuracy
- Suitable for ECD-applications
- Simple outlet pressure limitation by handwheel
- Powder coated bonnet

Technical data

Inlet pressure P_1	max. 50 bar (higher inlet pressure upon request)
Outlet pressure P_2	max. 20 bar
Flow rate Q	see flow curve
Materials	
Body:	SS 316L (SS 1.4404)
Diaphragm:	Hastelloy
Valve seat:	PTFE
In- / outlet	3/8"-NPT female
Pressure gauge conn.	1/4"-NPT female
Leak rate	1×10^{-8} mbar l/s He
Weight	1,5 kg

Flow curves LE71

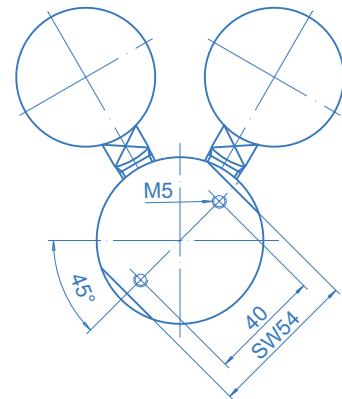
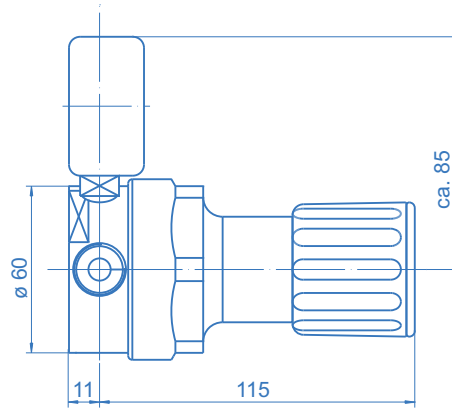
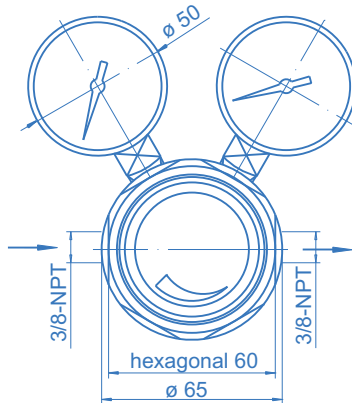


Line pressure regulator LE71



Dimensions - pressure regulator LE71 side view

rear view / mounting



Ordering information:
LE71 series line pressure regulators

LE71 - 50 - 10 - M - M - N₂

Inlet pressure P₁

50 - max. 50 bar

Outlet pressure P₂

- 1,5 - up to 1,5 bar
- 4 - up to 4 bar
- 10 - up to 10 bar
- 20 - up to 20 bar

Type of gas

Please specify type of gas!

Outlet press. indication

- B - without (plug)
- M - pressure gauge
- 0 - 1/4"-NPT-port only

Inlet press. indication

- B - without (plug)
- M - pressure gauge
- 0 - 1/4"-NPT-port only

Specifications

- SPECTROCEM - components guarantee maximum quality by using high grade materials and a quality assurance program acc. to ISO 9001.
- All components which come into contact with the medium are cleaned in an ultrasonic cleaning system (CFC-free) with the special cleaning process SPECTRO-CLEAN® and are then baked out.
- SPECTROCEM - components undergo a 100% Helium-leak-test.

Important note regarding component selection

- In order to assure safe operation it is essential to take the configuration of the whole system into account when selecting a control panel.
- The function of the components, the compatibility of the materials, correlating temperature ranges, correct installation, operation and maintenance in accordance with the relevant regulations are the responsibility of the system designer and the user.

***) Important note regarding corrosive gases**

Using gas mixtures with corrosive components >1% or very critical applications, we recommend our pressure control panels SE in combination with the purge- and connection block SBE/3.