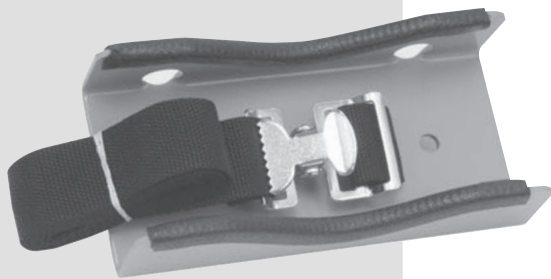


ACCESSORIES



G 100 Single Cylinder Wall Bracket

The G 100 is an all steel construction bracket with many quality construction features. The edges are protected with steel reinforced vinyl edge guarding to maintain and protect your cylinders and provide extra grip. Steel parts are sealed with epoxy powder paint to assure long service life and chemical resistance. Straps and cinch style buckles are chosen as primary means of support as they enable the cylinders to be held tight and secure against the brackets. Support straps are 1 1/2" wide by 54" long polypropylene with steel cinch buckle and rate a robust 1200 PSIG strength. Supports hold cylinders from 4" to 12" diameter.

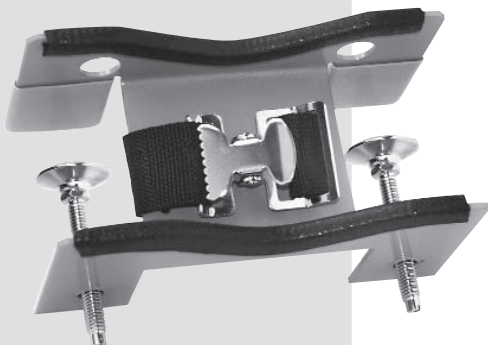
PART NO.	DESCRIPTION	SIZE	WEIGHT
4302650	G 100	4.25"x8"x2.25"	3 lb.
4302652	Optional Chain Set	41"	1 lb.



G 110 Single Cylinder Adjustable Bracket

Molded from reinforced polypropylene, the G 110 bracket can be adjusted to snugly support any cylinder from 4" to 14" diameter. Unit is first set to designated cylinder diameter with recessed set screws locking in width position. Permanently mounts to wall using fasteners (not included). Strap and security chain sets included.

PART NO.	SIZE	WEIGHT
4302653	9"x4"x5"	2 lb.



G 150 Single Cylinder Bench Mount Bracket

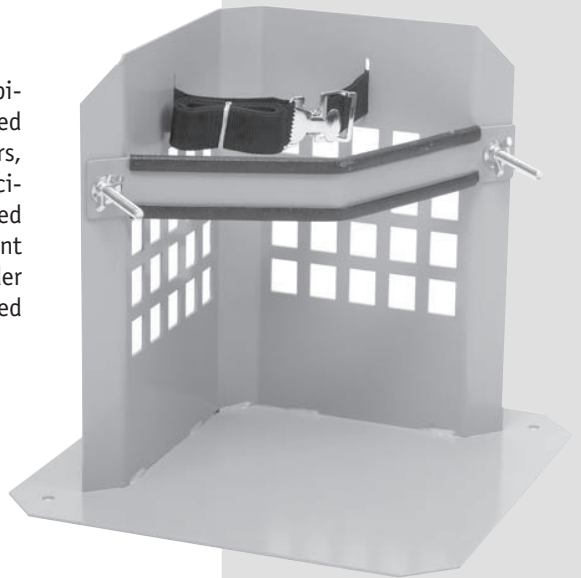
Bench cylinder bracket G-150: This bench mount single cylinder bracket uses dual mounting posts with swivel feet and non-slip pads to clamp to bench or table tops from 3/8" to 1 3/4" thick. Standard strap set and optional chain set (G-105) secure cylinders 4" to 14" diameter. Especially useful where walls are not accessible to attach brackets or when temporary, safe cylinder supports are required.

PART NO.	DESCRIPTION	SIZE	WEIGHT
4302654	G 150	4.25"x8"x4.25"	4.5 lb.
4302652	Optional Chain Set	41"	1 lb.

ACCESSORIES

G 181 Single Cylinder Floor Stand

The G-181, safely supports 4" through 10" diameter cylinders using a combination of cinch buckle, polypropylene strap, and 10 gauge steel bar. Designed and built for the safe storage of industrial and commercial use gas cylinders, this stationary rack is constructed from cold rolled steel. One cylinder capacity stands share the 1 1/2" polypropylene straps and steel cinch buckles used in our brackets. All welded construction and quality epoxy powder paint finishes provide structural integrity and long service life. As with our cylinder brackets, surfaces coming into direct contact with the cylinders are protected with steel reinforced vinyl edge guards, protecting your equipment.



PART NO.	SIZE	WEIGHT
4302655	16"x16"x15"	21 lb.

Wall Mounted Cylinder Brackets

All steel construction brackets and racks share many quality construction features. 11 gauge hot rolled steel form the foundation. Edges are protected with steel reinforced vinyl edge guarding to help maintain your cylinders and provide extra grip. Steel parts are sealed with epoxy powder paint to assure long service life and chemical resistance. Straps and cinch style buckles are chosen as primary means of support as they enable the cylinders to be held tight and secure against the brackets. Support straps are 1 1/2" wide by 54" long polypropylene with steel cinch buckle and rate a robust 1200 PSIG strength. Supports hold cylinders from 4" to 12" diameter.

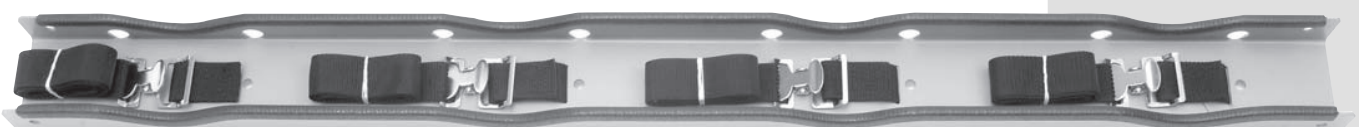
PART NO.	MODEL NO.	SIZE	WEIGHT
4302656	G200	24"x2"x4"	8 lb.
4302659	G300	4.25"x36"x2.25"	11 lb.
4302662	G401	4.25"x48"x2.25"	14 lb.



G 200 Double Cylinder Wall Bracket



G 300 Triple Cylinder Wall Bracket



G 401 Four Cylinder Wall Bracket

ACCESSORIES

Cylinder Racks & Process Stations

The stationary cylinder floor stands and process stations are designed and built for the safe storage of industrial and commercial use gas cylinders up to a 12" diameter. These stationary racks are constructed from 11 gauge and heavier plate steel. The cylinder capacity racks share the 1.5" polypropylene straps and steel cinch buckles used in our brackets. Fully welded construction and quality epoxy powder paint finishes provide structural integrity and long service life. As with our cylinder brackets, surfaces coming into direct contact with the cylinders are protected with steel reinforced vinyl edge guards, protecting your equipment. Units ship partially disassembled for freight savings.



G 400 Four Cylinder Floor Stand



PART NO.	MODEL NO.	SIZE	WEIGHT
4302661	G400	24"x36.5"x30"	65 lb.
4302665	G600	24"x48.5"x30"	81 lb.



G 277 Two Cylinder Process Station Rack



G 400P Four Cylinder Process Station



G 600P Six Cylinder Process Station

PART NO.	MODEL NO.	SIZE	WEIGHT
4302673	G277	12"x28"x72"	56 lb.
4302675	G400P	24"x36.5"x72"	98 lb.
4302676	G600P	24"x48.5"x30"	119 lb.

ACCESSORIES

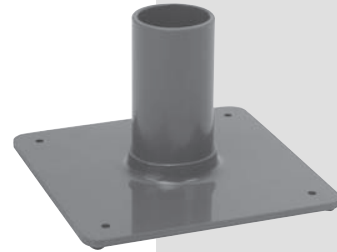
Bottle Holders

Due to the round bases on lecture bottles, specially designed bottle holders are recommended to secure them in place at their point of use.

G 700 Laboratory Lecture Bottle Holder

PVC construction units are durable and chemical resistant. Formed heavy PVC walls chemically welded. Sized to fit lb. style (2" diameter) bottles. Stand (P/N G 700) has four bench mounting holes for optional permanent installation.

PART NO.	SIZE	WEIGHT
4302677	5"x8"x8"	1.5 lb.



G 710 Laboratory Lecture Bottle Holder

Formed heavy PVC walls chemically welded. Sized to fit lb. style (2" diameter) bottles. The G 710 features wall or bench mounting holes for 1 bottle.

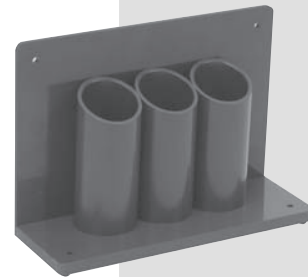
PART NO.	SIZE	WEIGHT
4302678	8"x5"x4"	1.5 lb.



G 730 Triple Laboratory Lecture Bottle Holder

Formed heavy PVC walls chemically welded. Sized to fit lb. style (2" diameter) bottles. P/N G 730 features wall or bench mounting holes for 3 bottles.

PART NO.	SIZE	WEIGHT
4302679	7.5"x11"x4"	4 lb.



G 760 Lecture Bottle Carrier

Formed heavy PVC walls chemically welded. The G 760 features loop carry handle. To store or transport six lb. style bottles.

PART NO.	SIZE	WEIGHT
4302680	9"x6"x19"	6 lb.

