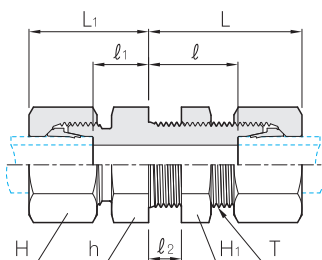


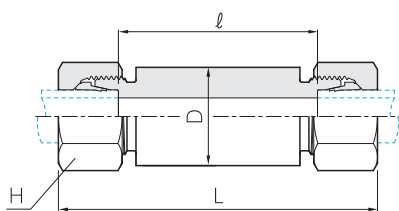
Bulkhead Union DBU



$l_2 = 16\text{mm Max.}$

Series	Part No.	Tube O.D.	H	H ₁	h	L	L ₁	l	l ₁	T	PN(bar)		
											C.Steel	SS316	BRASS
L	DBU - 06L	6	14	17	17	42	22	27.0	7.0	M 12 X 1.5	500	315	200
	DBU - 08L	8	17	19	19	42	23	27.0	8.0	M 14 X 1.5	500	315	200
	DBU - 10L	10	19	22	22	43	25	28.0	10.0	M 16 X 1.5	500	315	200
	DBU - 12L	12	22	24	24	44	25	29.0	10.0	M 18 X 1.5	400	315	200
	DBU - 15L	15	27	30	27	46	27	31.0	12.0	M 22 X 1.5	400	315	200
	DBU - 18L	18	32	36	32	49	30	32.5	13.5	M 26 X 1.5	400	315	200
	DBU - 22L	22	36	41	36	51	33	34.5	16.5	M 30 X 2.0	250	160	100
	DBU - 28L	28	41	46	41	52	35	35.5	18.5	M 36 X 2.0	250	160	100
	DBU - 35L	35	50	55	50	58	40	36.5	18.5	M 45 X 2.0	250	160	160
	DBU - 42L	42	60	65	60	59	42	36.0	19.0	M 52 X 2.0	250	160	160
S	DBU - 06S	6	17	19	19	44	27	29.0	12.0	M 14 X 1.5	800	630	400
	DBU - 08S	8	19	22	22	44	28	29.0	13.0	M 16 X 1.5	800	630	400
	DBU - 10S	10	22	24	24	46	31	29.5	14.5	M 18 X 1.5	800	630	400
	DBU - 12S	12	24	27	27	47	31	30.5	14.5	M 20 X 1.5	630	630	400
	DBU - 14S	14	27	30	30	50	35	32.0	17.0	M 22 X 1.5	630	630	400
	DBU - 16S	16	30	32	32	50	35	31.5	16.5	M 24 X 1.5	630	400	250
	DBU - 20S	20	36	41	41	55	39	33.5	17.5	M 30 X 2.0	420	400	250
	DBU - 25S	25	46	46	46	59	44	35.0	20.0	M 36 X 2.0	420	400	250
	DBU - 30S	30	50	50	50	64	48	37.5	21.5	M 42 X 2.0	420	400	250
	DBU - 38S	38	60	65	65	68	53	37.0	22.0	M 52 X 2.0	420	315	250

Welding Bulkhead Union DBUW



Series	Part No.	Tube O.D.	D	H	L	l	PN(bar)	
							Steel	SS316
L	DBUW - 06L	6	18	14	85	56	500	315
	DBUW - 08L	8	20	17	85	56	500	315
	DBUW - 10L	10	22	19	87	58	500	315
	DBUW - 12L	12	25	22	87	58	400	315
	DBUW - 15L	15	28	27	100	70	400	315
	DBUW - 18L	18	32	32	101	69	400	315
	DBUW - 22L	22	36	36	105	73	250	160
	DBUW - 28L	28	40	41	106	73	250	160
	DBUW - 35L	35	50	50	114	71	250	160
	DBUW - 42L	42	60	60	115	70	250	160
S	DBUW - 06S	6	20	17	89	60	800	630
	DBUW - 08S	8	22	19	89	60	800	630
	DBUW - 10S	10	25	22	91	59	800	630
	DBUW - 12S	12	28	24	91	59	630	630
	DBUW - 14S	14	30	27	107	72	630	630
	DBUW - 16S	16	35	30	107	71	630	400
	DBUW - 20S	20	38	36	114	71	420	400
	DBUW - 25S	25	45	46	120	72	420	400
	DBUW - 30S	30	50	50	126	73	420	400
	DBUW - 38S	38	60	60	133	72	420	315

Dimensions are given for approximate length with tightened nut. All dimensions are in millimeters for reference only, subject to change.