



General use
pressure gauges

IMP G series



Ham-Let Industrial Mechanical
Pressure gauges



IMP**G** series

Data Sheet:

General:

The Industrial, G - General Use pressure gauges series guarantee long life and durability for indoor, outdoor and harsh surroundings, industrial, instrumentation and process applications.

The G series pressure gauge is a bourdon tube mechanical device, Case sizes 50, 63, 100, 160mm (2", 2½", 4", 6") suitable for vacuum to pressure up to 1000bar (15,000psi).

Features:

- All stainless steel case and wetted parts.
- Polished Crimped-on ring for firm window sealing.
- Safety laminated glass front.
- Case is filled or fillable dry.
- Case protection: IP 65 (IP 54 for 160mm (6") case with range 30psi (2.5bar) and below).
- Safety category (EN 837-1) S1 for pressure gauges with blow-out device.
- **Measuring Ranges**
 - Vacuum: 30" Hg Vac. to 0 psi (-1 to 0 bar)
 - Compound: 30" Hg Vac. through 0 to 300 psi (-1 through 0 to 15 bar)
 - Pressure: 0 to 15,000 psi (0 to 1,000 bar), 50mm (2") case up to 10,000psi (600 bar)

Materials of construction

Part		Material
Wetted Parts:	Process Connection	SS 316L
	Bourdon Tube	
Case		SS 304L
Window		Laminated safety glass
Movement		Stainless steel
Dial		Aluminum (black figures, white background)
Pointer		Aluminum (black)

Technical data

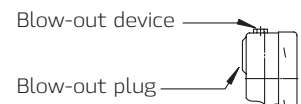


Case Size		50mm (2")	63mm (2½")	100mm (4")	160mm (6")
Accuracy	Up to 6,000psi (400 bar)	±1.6% of span EN 837-1 Class 1.6 ASME B40.1 Grade B	±1.6% of span EN 837-1 Class 1.6 ASME B40.1 Grade B	±1.0% of span EN 837-1 Class 1.0 ASME B40.1 Grade 1A	±1.0% of span EN 837-1 Class 1.0 ASME B40.1 Grade 1A
	10,000psi (600bar) and above (2)	±2.5% of span EN 837-1 Class 2.5 ASME B40.1 Grade C	±2.5% of span EN 837-1 Class 2.5 ASME B40.1 Grade C	±1.0% of span EN 837-1 Class 1.0 ASME B40.1 Grade 1A	±1.0% of span EN 837-1 Class 1.0 ASME B40.1 Grade 1A
Case Configurations	Process connection position				
	Mounting device (Optional)				
Process Connection	½", 12mm Tube adapter			+	
	3/8", 10mm Tube adapter	+	+		
	¼", 6mm Tube adapter	+	+		
	½" BSP-P/NPT			+	+
	¼" BSP-P/NPT	+	+	+	+
	1/8" BSP-P/NPT	+	+		
	M20x1.5			+	+
	M12x1.5	+	+		+
Blow-Out Device	½" face seal Male/Female swivel	+	+(3)		
	Blow-out device at the top of the case				+
	Blow-out plug in the back of the case, Ø 40mm (1½")			+	
Case Ventilation	Blow-out plug at the top of the case		+		
	By blow-out device / Plug	+	+		+
Weight (1) Pound (Kg.)	Unfilled	0.198 (0.09)	0.40 (0.18)	1.33 (0.60)	2.43 (1.10)
	Filled	0.286 (0.13)	0.55 (0.25)	1.98 (0.90)	3.75 (1.70)

(1) Approx. without mounting device

(2) See Maximal pressure per connection type, page 6

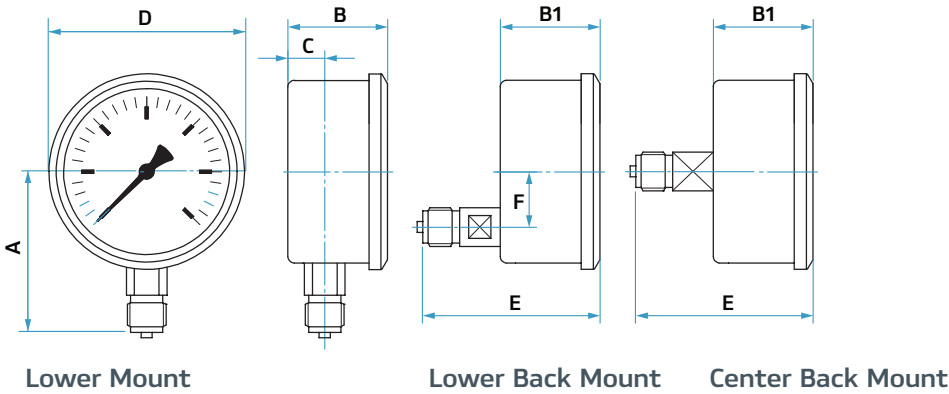
(3) Center back mount only





Ham-Let IMP gauges **G** Series

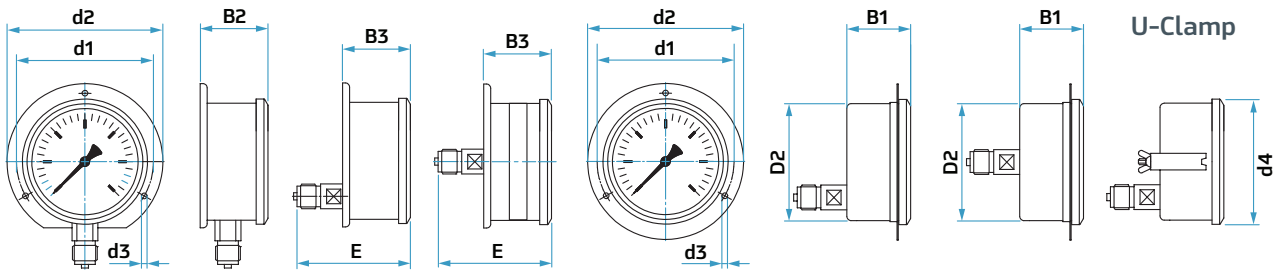
Configuration and mounting dimensions



Case Size		A		B		B1		C		D		E		F	
mm	inch	mm	inch	mm	inch	mm	inch	mm	inch	mm	inch	mm	inch	mm	inch
50	2	45	1.77	29	1.14	31	1.22	10	0.4	54	2.13	50	1.97	-	-
63	2 1/2	54	2.13	33	1.3	37	1.46	10	0.40	67	2.63	60	2.36	18	0.71
100	4	87	3.43	54	2.13	54	2.13	20	0.79	106	4.17	96	3.78	30	1.18
160	6	115	4.53	50	1.97	55	2.17	15	0.59	167	6.57	97	3.82	30	1.18

Back Flange Mounting

Front Flange Mounting



Case Size		B2		B3		D2		d1		d2		d3		d4	
mm	inch	mm	inch	mm	inch	mm	inch	mm	inch	mm	inch	mm	inch	mm	inch
50	2	-	-	-	-	51	2.01	60	2.36	71	2.8	3.6	0.14	71	2.8
63	2 1/2	36	1.42	40	1.57	64	2.52	75	2.95	85	3.35	3.6	0.14	-	-
100	4	57.5	2.26	57.5	2.26	101	3.98	116	4.57	132	5.2	4.8	0.19	-	-
160	6	53	2.09	58	2.28	-	-	178	7.01	196	7.72	5.8	0.23	-	-