

## Line regulators

### HPI 100L

#### High purity - single stage line regulator

Model HPI 100L is a line regulator available in chrome plated brass (HPI 100LC) or stainless steel (HPI 100LS) barstock, for pipeline and other applications up to 40 bar (580 psig) inlet pressure.

#### APPLICATIONS:

- High purity gas applications
- Research sample systems gases
- Gas chromatography
- Calibration gas
- Process analyzer gases
- Emission monitoring systems

#### FEATURES:

- Recommended for non-corrosive gases purity levels up to grade 6.0 (99.9999)
- 316L stainless steel diaphragm eliminates contamination from diffusion or outgassing
- HPI 100LC - chrome plated body, bonnet and fittings
- HPI 100LS - 316L stainless steel body, bonnet and fittings
- $1 \times 10^{-9}$  mbar l/s He inboard helium leak rate to maintain gas purity levels
- 4 ports flexible configuration
- The 1/8" NPT thread on the bonnet venting for safety in 316L SS version
- Maximum inlet pressure 40 bar (580 psig)
- Cleaned for oxygen service

#### TECHNICAL DATA:

Type	Single stage
Purity	Up to 6.0
Inlet pressure	Max. 40 bar (580 psi)
Outlet pressure	2/4/10/20 bar (29/58/145/290 psi)
Flow capacity	Cv = 0,18
Oxygen use	Suitable

#### MATERIALS:

Body, bonnet	316L stainless steel barstock or chrome plated brass barstock
Diaphragm	Hastelloy®*C276
Nozzle	316L stainless steel
Seat	PEEK
Seals O-ring	Viton®** (FKM)
Filter	SS 316L
Adjusting Knob	ABS plastic

\* Hastelloy® is a registered trademark name of Haynes International, Inc

\*\* Viton® is a registered trademark of The Chemours Company



Model shown with additional accessories to be ordered separately

#### RELATED OPTIONS:

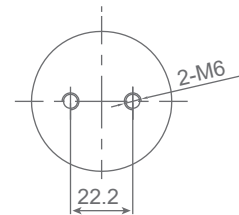
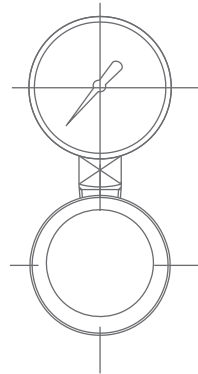
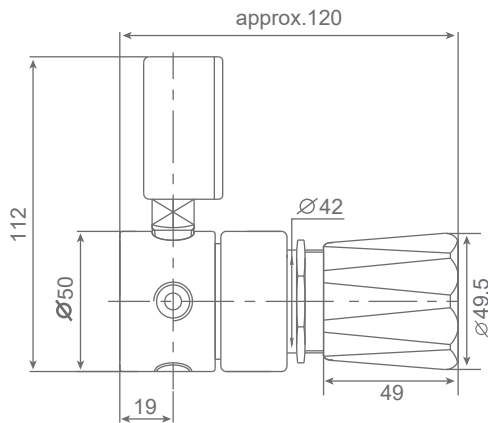
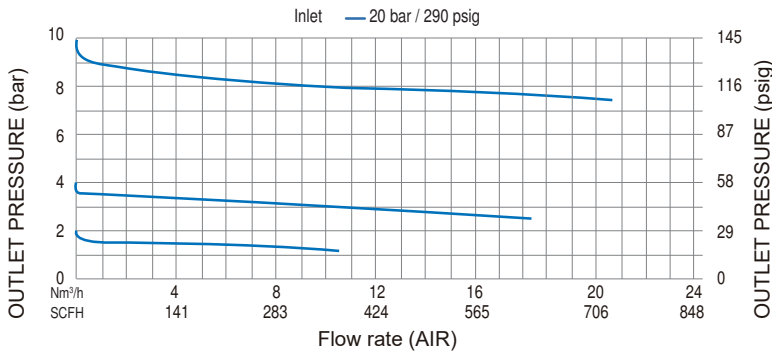
Wall mounting bracket: HPI-L-BPB



## SPECIFICATIONS:

Inlet / outlet ports	1/4" FNPT
Weight	1,04 kg
Temperature range	-30°C to +74°C

## FLOW CHART: HPI 100L



## ORDERING INFORMATION:

MODEL	MATERIAL	INLET CONFIGURATION		OUTLET PRESSURE	INLET CONNECTION	OUTLET CONFIGURATION	OPTIONS	GAS TYPE
HPI 100LC	Chrome plated brass	Right	R	0 - 2 bar 0 - 29 psig	029 1/4" FNPT	000 1/4" FNPT A	He leak cert. (inboard)	2 Please specify
HPI 100LS	Stainless steel	Left	L	0 - 4 bar 0 - 58 psig	058 1/4" MNPT	001 1/4" FNPT diaph. valve B	No gauges	3
				0 - 10 bar 0 - 145 psig	145 1/4" tube fitting	002 1/4" MNPT nipple C	With relief valve	4
				0 - 20 bar 0 - 290 psig	290 6 mm tube fitting	003 1/4" tube fitting D	He leak cert. (outboard)	5
					8 mm tube fitting	004 1/8" tube fitting E	Wall mounting Bracket	P
						6 mm tube fitting F		
						8 mm tube fitting G		

For example:

HPI 100LC R 058 DIN 6 BE 2 Ar