

HPI 600L

High purity and high pressure - single stage barstock line regulator

The Model HPI 600L is a single stage high pressure line regulator that is designed to deliver high outlet pressures when used on high pressure cylinders up to 300 bar (4350 psig).

Regulator is available in chrome plated brass (HPI 600LC) or stainless steel (HPI 600LS) barstock for pressure control of non-corrosive gases.

APPLICATIONS:

- Non-corrosive high pressure gas applications
- High pressure testing
- Charging accumulators
- Pressurizing aircraft struts

FEATURES:

- Recommended for non-corrosive gases purity levels up to grade 6.0 (99.9999)
- 316L stainless steel diaphragm eliminates contamination from diffusion or outgassing
- HPI 600LC - chrome plated body, bonnet and fittings
- HPI 600LS - 316L stainless steel body, bonnet and fittings
- 1×10^{-9} mbar l/s He inboard helium leak rate to maintain gas purity levels
- 4 ports flexible configuration, one high pressure and three low pressure
- The 1/8" NPT thread on the bonnet venting for safety in 316L SS version
- Maximum inlet pressure 300 bar (4350 psig)
- Cleaned for oxygen service

TECHNICAL DATA:

Type	Single stage
Purity	Up to 6.0
Inlet pressure	Max. 300 bar (4350 psi)
Outlet pressure	50/100/200 bar (725/1450/2900 psi)
Flow capacity	Cv = 0,15
Oxygen use	Suitable

MATERIALS:

Body, bonnet	316L stainless steel barstock or chrome plated brass barstock
Diaphragm	Hastelloy [®] **C276
Nozzle	316L stainless steel
Seat	PEEK
Seals O-ring	Viton [®] ** (FKM)
Filter	SS 316L
Adjusting Knob	ABS plastic

* Hastelloy[®] is a registered trademark name of Haynes International, Inc
** Viton[®] is a registered trademark of The Chemours Company



Model shown with additional accessories to be ordered separately

RELATED OPTIONS:

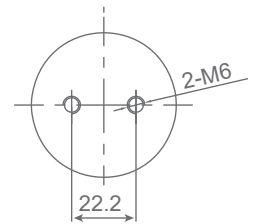
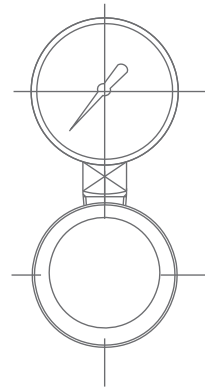
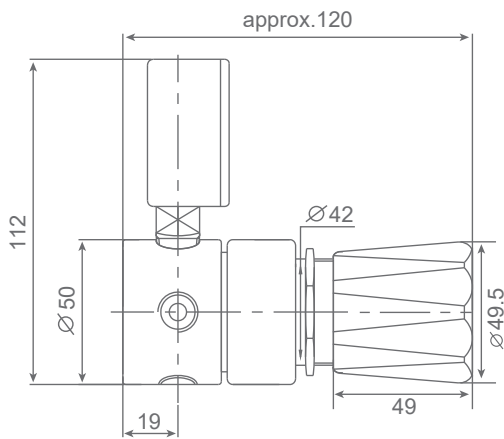
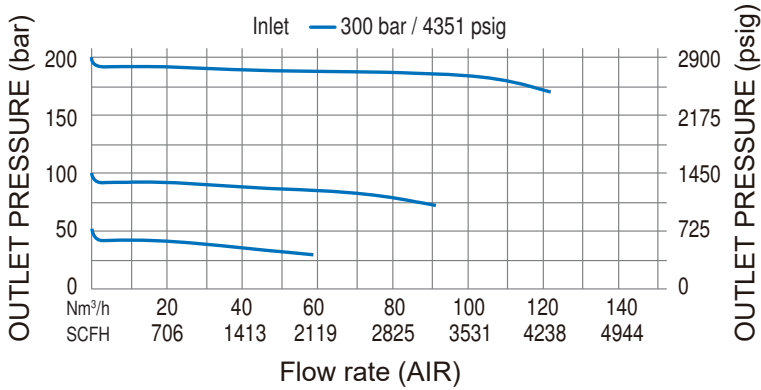
Wall mounting bracket: HPI-L-BPB



SPECIFICATIONS:

Inlet / outlet ports	1/4" FNPT
Weight	1,13 kg
Temperature range	-30°C to +74°C

FLOW CHART: HPI 600L



ORDERING INFORMATION:

MODEL	MATERIAL	INLET CONFIGURATION		OUTLET PRESSURE		INLET CONNECTION		OUTLET CONFIGURATION		OPTIONS	GAS TYPE	
HPI 600LC	Chrome plated brass	Right	R	0 - 50 bar 0 - 725 psig	725	1/4" FNPT	000	1/4" FNPT	A	He leak cert. (inboard)	2	Please specify
HPI 600LS	Stainless steel	Left	L	0 - 100 bar 0 - 1450 psig	1450	1/4" tube fitting	002	1/4" tube fitting	D	No gauges	3	
				0 - 200 bar 0 - 2900 psig	2900					6 mm tube fitting	003	
				200 bar with 316L body only								Wall mounting Bracket

For example:

HPI 600LC R 720 000 A 2 N₂