

HP 701

High purity - chrome plated brass regulator

Model HP 701 is a chrome plated single stage cylinder regulator with a stainless steel diaphragm for general laboratory use. The HP 701 can be used when a slight pressure rise from full to empty cylinder can be tolerated.

APPLICATIONS:

- Non-corrosive gases
- Vacuum control
- Purging
- Pressure testing
- Blanketing

FEATURES:

- Recommended for gas purity up to grade 5.0 (99.999)
- 302L stainless steel diaphragm eliminates contamination from diffusion or outgassing
- One-piece encapsulated seat design to protect seat from particulate contamination
- Chrome plated bonnet, body and fittings
- 1×10^{-8} mbar l/s He inboard helium leak rate to maintain gas purity levels
- Maximum inlet pressure 210 bar (3000 psig)

TECHNICAL DATA:

Type	Single stage
Purity	Up to 5.0
Inlet pressure	Max. 210 bar (3000 psig)
Outlet pressure	0-1/3,5/8,5/17 bar (15/50/125/250 psig)
Flow capacity	Cv = 0,17
Oxygen use	Suitable

MATERIALS:

Body	Chrome plated brass
Bonnet	Chrome plated die cast
Diaphragm	302 stainless steel
Nozzle	Brass
Seat	PTFE Teflon*
Seals	PTFE Teflon*
Filter	Nickel-plated sintered bronze - 10 micron
Seat	PH-17 stainless steel
Adjusting Knob	ABS plastic

SPECIFICATIONS:

Inlet / outlet ports	1/4" FNPT
Weight	1,6 kg

* Teflon® is a registered trademark of The Chemours Company

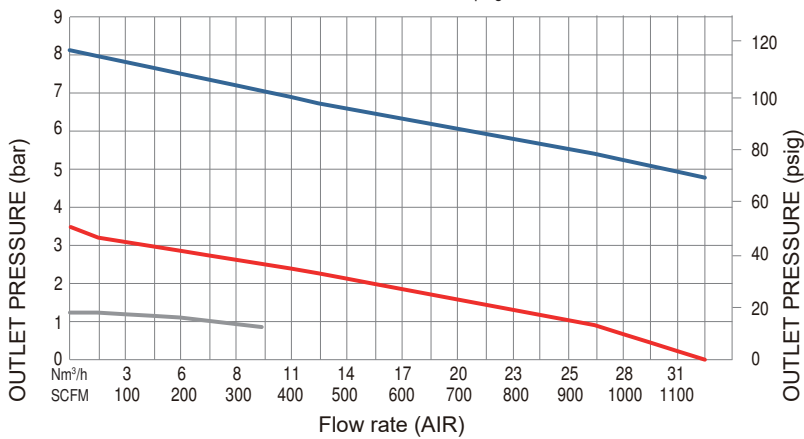


Model shown with additional accessories to be ordered separately

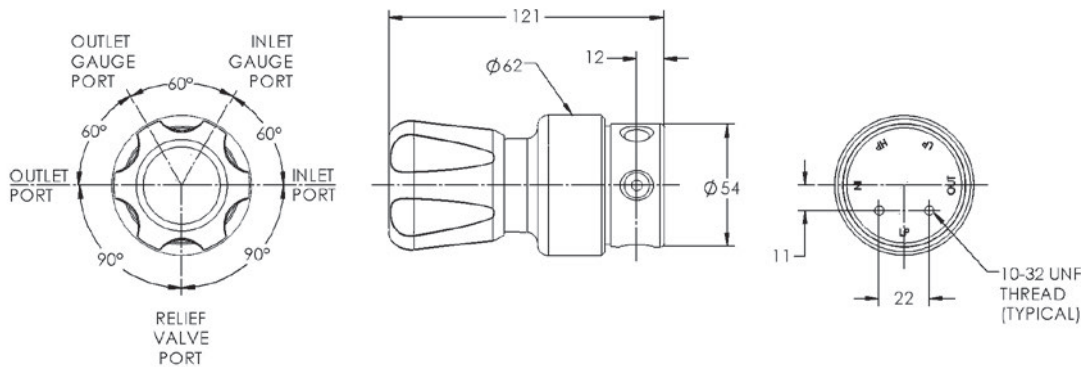
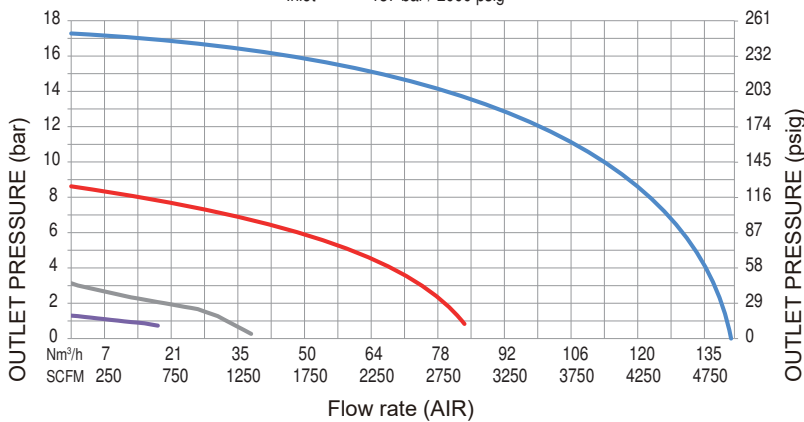
FLOW CHART:

HPI 701

Inlet — 13,7 bar / 200 psig



Inlet — 137 bar / 2000 psig



ORDERING INFORMATION:

MODEL	INLET CONFIGURATION	OUTLET PRESSURE	INLET CONNECTION	OUTLET CONFIGURATION	OPTIONS	GAS TYPE					
HP 701	Right	0 - 1 bar	015	1/4" FNPT	000	1/4" FNPT	A	He leak cert. (inboard)	2	Please specify	
		0 - 15 psig	050			1/4" FNPT diaph. valve	B	No gauges	3		
		0 - 3,5 bar	125			1/4" MNPT nipple	C	With relief valve	4		
		0 - 50 psig	250			1/4" tube fitting	D	He leak cert. (outboard)	5		
		0 - 8,5 bar				1/8" tube fitting	E	60 bar inlet gauge	6		
		0 - 125 psig				6 mm tube fitting	F				
		0 - 17 bar				8 mm tube fitting	G				
		0 - 250 psig									
						BS341					
						UNI					
		NBN									
		NEN 3268									
For example:											
HP 701		015	DIN 6		BF	2 Ar					