

Flexible hoses

HPI FH

Flexible hoses for connecting gas supply panels and gas cylinder

FEATURES:

- HPI FH S hose made of stainless steel 316L / 304
- HPI FH T hose made of PTFE + stainless steel 304
- Special requirements on request
- The hose is made of stainless steel 316L or PTFE inside, a stainless steel 304 double braid and end needed connections
- All hoses are equipped with stainless steel safety cable
- Inner diameter 6 mm
- Elbow connection on cylinder side



Model shown with additional accessories to be ordered separately

ORDERING INFORMATION:

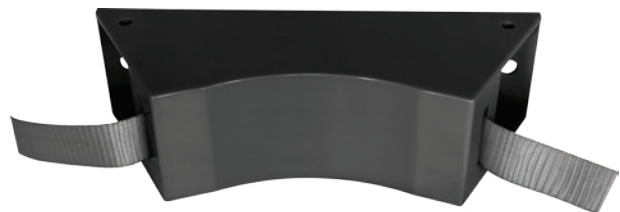
MODEL	LENGTH		INLET CONFIGURATION		CYLINDER CONNECTION	OPTION	
HPI FH T PTFE/stainless steel 304	1000 mm	1000	1/4" NPT (Male) Panel connection	001	Cylinder connection Please specify	Elbow connection on cylinder connection side	000
HPI FH S 316L/304 stainless steel	2000 mm	2000	1/4" NPT (Female)	002		Elbow connection on both sides	EE
	3000 mm	3000				Straight cylinder connection	SC

For example: HPI FXT-1000-001-DIN477 no6-000

Cylinder Wall Bracket

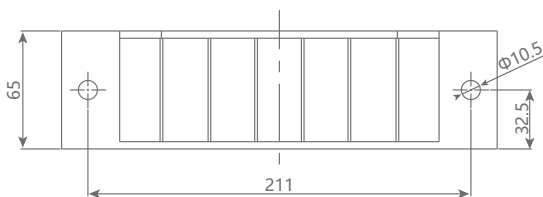
DESCRIPTION:

- Special design for one cilinder
- Easy installation to a wall or construction
- Delivered with safety belt
- ABS material



Other configuration on request

Model shown with additional accessories to be ordered separately



Part no.
9009506

