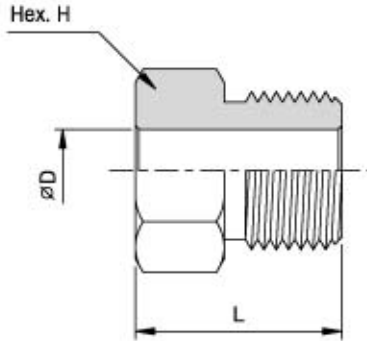


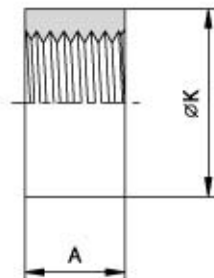
A complete range of elbows, tees, and crosses is available for all of the tubing connection sizes. Material is high tensile 316 stainless steel, Standard tubing glands and collars are provided unless otherwise specified.



Glands

Unit : mm

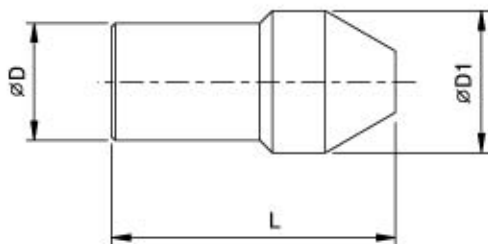
| Catalog No. | Pressure Rating psi | Tube Size | D | L | H |
|-------------|---------------------|-----------|------|------|------|
| HPG20K-4M | 20,000 | 1/4" | 6.4 | 14.2 | 12.7 |
| HPG20K-6M | 20,000 | 3/8" | 9.5 | 18.3 | 15.7 |
| HPG20K-9M | 20,000 | 9/16" | 14.3 | 25.4 | 22.4 |
| HPG20K-12M | 20,000 | 3/4" | 19.1 | 23.9 | 28.4 |
| HPG20K-16M | 20,000 | 1" | 25.4 | 35.1 | 35.1 |



Collars

Unit : mm

| Catalog No. | Pressure Rating psi | Tube Size | A | K |
|-------------|---------------------|-----------|------|------|
| HPC20K-4M | 20,000 | 1/4" | 5.6 | 9.7 |
| HPC20K-6M | 20,000 | 3/8" | 6.4 | 11.9 |
| HPC20K-9M | 20,000 | 9/16" | 7.9 | 18.3 |
| HPC20K-12M | 20,000 | 3/4" | 9.7 | 23.9 |
| HPC20K-16M | 20,000 | 1" | 12.7 | 31.8 |



Plugs

Unit : mm

| Catalog No. | Pressure Rating psi | Tube Size | D | L | D1 |
|-------------|---------------------|-----------|------|------|------|
| HPP20K-4M | 20,000 | 1/4" | 6.4 | 25.4 | 9.7 |
| HPP20K-6M | 20,000 | 3/8" | 9.5 | 31.8 | 11.9 |
| HPP20K-9M | 20,000 | 9/16" | 14.3 | 39.6 | 18.3 |
| HPP20K-12M | 20,000 | 3/4" | 19.1 | 41.1 | 23.9 |
| HPP20K-16M | 20,000 | 1" | 25.4 | 55.6 | 31.8 |

All dimensions are for reference only, subject to change.