

HRT Series

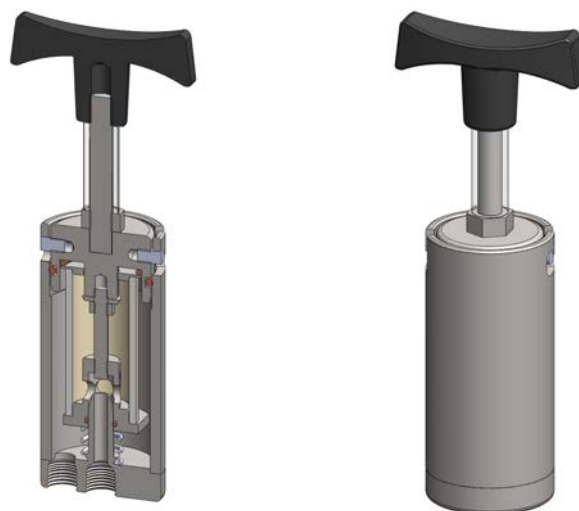
Heatable Filter Housing

| | |
|------------------|-------------------------------|
| Materials | 316L SS |
| Pressure | 7 Bar |
| Ports | 1/4" |
| Element | 25.64.□ & 25.178.□ |

The HRT series filter housings are designed for hot gas analysis, for example diesel exhaust. The housings can be heated by fitting a suitable heater to the body, installing in a heated enclosure. The bayonet connection allows fast filter element service even at operating temperatures.

The housings have the inlet and outlet ports in the end of the housing and a tie rod & element retainer.

Standard housings have NPT ports and include silicone seals. Viton seals are available as an option. BSPT and BSPP port types are also available.



Technical Specifications

Housing Model

HRT211.201

HRT231.201

| | |
|-------------------------|----------|
| Port Size | 1/4" NPT |
| Maximum Pressure, Bar | 7 |
| Maximum Temperature, °C | 200 |
| Port Position | End |
| Internals Type | Tie Rod |

| |
|----------|
| 1/4" NPT |
| 7 |
| 200 |
| End |
| Tie Rod |

Materials of Construction (1)

| | |
|-------------------------|----------|
| Head & Internals | 316L SS |
| Seals (2) | Silicone |
| Filter Element Code (3) | 25.64.□ |

| |
|----------|
| 316L SS |
| Silicone |
| 25.178.□ |

Principal Dimensions in mm

| | |
|------------------|------|
| Diameter | 53 |
| Height of Body | 113 |
| Length of Handle | 90 |
| Volume, cc | 100 |
| Weight, kg | 1.25 |

| |
|-----|
| 53 |
| 227 |
| 90 |
| 220 |
| 2.0 |

Notes

(1) Material abbreviations, 316L SS = 316L Stainless Steel

(2) Add suffix for other seal types, Chemraz = .C, Nitrile = N, Kalrez = .K, EPDM = .E, Viton = V (e.g. HST211.201.V)

(3) Replace the □ with the grade required, e.g. 25.64.5S