



Heavy duty
pressure gauges

IMPH series



Ham-Let Industrial Mechanical
Pressure gauges



IMPH series

Data Sheet:

General:

The industrial mechanical, H-Heavy duty pressure gauges series is designed to be used in industrial, instrumentation and process applications that require long durability with accuracy and easy maintainability for indoor, outdoor and harsh environments.

The H series pressure gauges are a bourdon tube mechanical devices. Case sizes 40, 63, 100, 160mm (1½", 2½", 4", 6") suitable for vacuum to pressure up to 1000bar (15,000psi).

Features:

- All stainless steel case and wetted parts.
- Bayonet ring and adjustable pointer for easy adjustment.
- Safety laminated glass front.
- Case is filled fillable dry.
- Case protection: IP 65 (IP 54 for 160mm (6") case with range 30psi (2.5bar) and below).
- Safety category (EN 837-1) S1 for pressure gauges with blow-out device 100mm (4") and 63mm (2½") cases.
- **Measuring Ranges**
 - Vacuum: 30" Hg Vac. to 0 psi (-1 to 0 bar)
 - Compound: 30" Hg Vac. through 0 to 300 psi (-1 through 0 to 15 bar)
 - Pressure: 0 to 15,000 psi (0 to 1,000 bar), 40mm (1½") case up to 10,000psi (600 bar)

Materials of construction

Part		Material
Wetted Parts	Process connection	SS 316L
	Bourdon tube	
Case		SS 304
Window		Laminated safety glass
Movement		Stainless steel
Dial		Aluminum (black figures, white background)
Pointer		Aluminum (black)

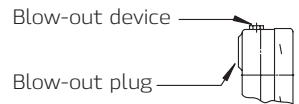
Ham-Let IMP gauges H Series



Technical data

Case Size		40mm (1½")	63mm (2½")	100mm (4")	160mm (6")
Accuracy	Up to 6,000psi (400 bar)	±1.6% of span EN 837-1 Class 1.6 ASME B40.1 Grade B	±1.6% of span EN 837-1 Class 1.6 ASME B40.1 Grade B	±1.0% of span EN 837-1 Class 1.0 ASME B40.1 Grade 1A	±1.0% of span EN 837-1 Class 1.0 ASME B40.1 Grade 1A
	10,000psi (600bar) and above (4)	±2.5% of span EN 837-1 Class 2.5 ASME B40.1 Grade C	±2.5% of span EN 837-1 Class 2.5 ASME B40.1 Grade C	±1.0% of span EN 837-1 Class 1.0 ASME B40.1 Grade 1A	±1.0% of span EN 837-1 Class 1.0 ASME B40.1 Grade 1A
Case Configurations	Process connection position				
	Mounting device (Optional)				
Process Connection	½", 12mm Tube adapter			+	
	3/8", 10mm Tube adapter	+ (1)	+		
	¼", 6mm Tube adapter	+	+		
	½" BSP-P/NPT			+	+
	¼" BSP-P/NPT	+ (1)	+	+	+
	1/8" BSP-P/NPT	+	+		
	M20x1.5			+	+
	M12x1.5	+ (1)	+	+	+
¼" face seal Male/Female swivel	+ (1)	+			
Blow-Out Device	Blow-out device at the top of the case				+
	Blow-out plug in the back of the case, Ø 40mm (1½")			+	
	Blow-out plug at the top of the case		+		
Case Ventilation	By blow-out device / Plug		+		+
	Internal pressure compensation by pressure equalizing membrane	+ (2)		+	
Weight (3) Pound (Kg.)	Unfilled	0.15 (0.07)	0.40 (0.18)	1.33 (0.60)	2.43 (1.10)
	Filled	0.22 (0.10)	0.55 (0.25)	2.10 (0.95)	4.30 (1.95)

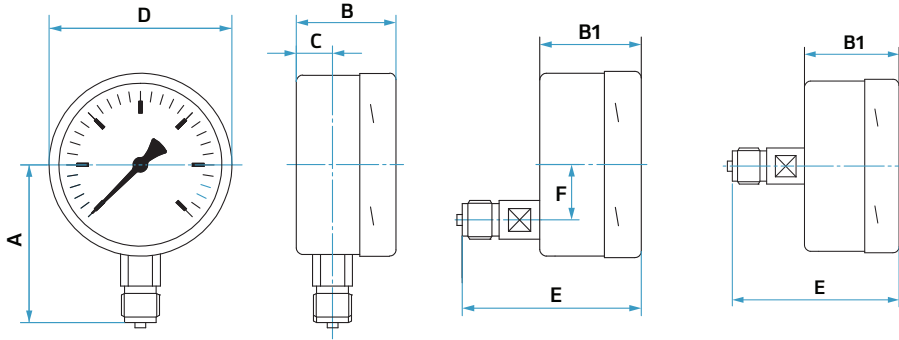
- (1) Center back only
- (2) For pressure ranges up to 0-200psi (0-16bar)
- (3) Approx. without mounting device
- (4) See Maximal pressure per connection type, page 6





Ham-Let IMP gauges **H** Series

Configuration And Mounting Dimensions



Lower Mount

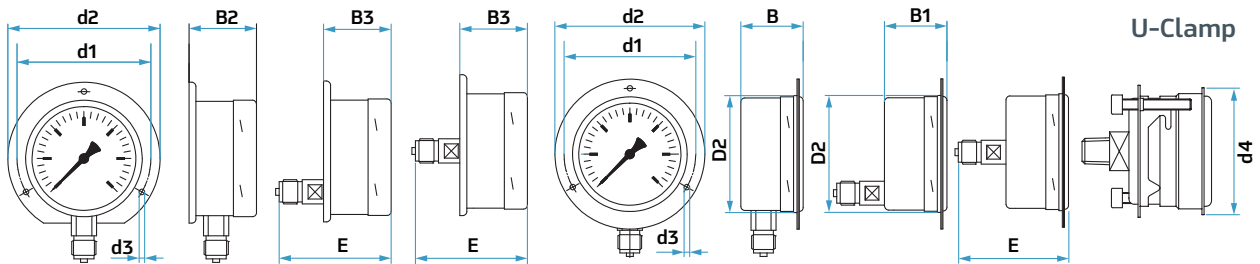
Lower Back Mount

Center Back Mount

Case Size		A		B		B1		C		D		E		F	
mm	inch	mm	inch	mm	inch	mm	inch	mm	inch	mm	inch	mm	inch	mm	inch
40	1 1/2	34.5	1.36	28	1.1	30	1.18	10	0.4	40	1.57	47	1.85	-	-
63	2 1/2	54	2.13	33	1.3	37	1.46	10	0.39	64	2.52	59	2.32	18	0.71
100	4	87	3.43	55	2.17	55	2.17	20	0.79	101	3.98	97	3.82	30	1.18
160	6	115	4.53	51	2.01	51	2.01	15.5	0.61	161	6.34	92.5	3.64	30	1.18

Back Flange Mounting

Front Flange Mounting



Case Size		B2		B3		D2		d1		d2		d3		d4	
mm	inch	mm	inch	mm	inch	mm	inch	mm	inch	mm	inch	mm	inch	mm	inch
40	2/1 1	-	-	-	-	41.8	1.64	51	2.01	61	2.4	3.6	0.14	46	1.81
63	2/1 2	36	1.42	40	1.57	66	2.6	75	2.95	85	3.35	3.6	0.14	-	-
100	4	58.5	2.3	58.5	2.3	103	4.06	116	4.57	132	5.2	4.8	0.19	-	-
160	6	54	2.13	54	2.13	163	6.42	178	7.01	196	7.72	5.8	0.23	-	-