

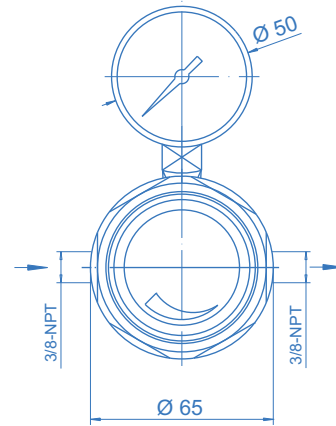
Line pressure regulator LM71

spectro lab



Pressure regulator LM71

Dimensions Pressure regulator LM71



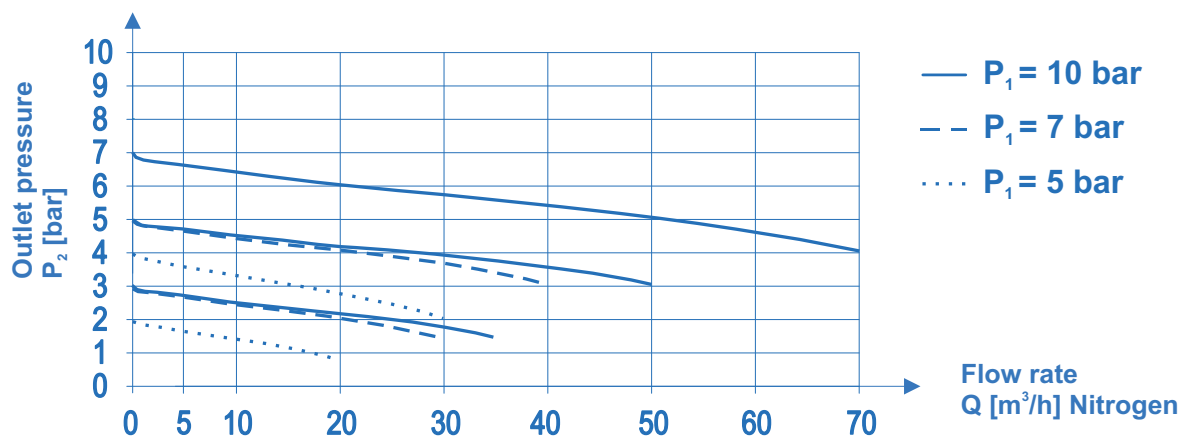
Product features

- Single-stage line pressure regulator for non-corrosive gases and gas mixtures up to quality 6.0.
- New laboratory-style design
- High control accuracy
- Suitable for ECD-applications
- Simple outlet pressure limitation by handwheel
- Powder-coated bonnet

Technical data

Inlet pressure P_1	max. 50 bar
Outlet pressure P_2	max. 20 bar
Flow rate Q	see flow curves
Materials	
Body:	chrome-plated brass
Diaphragm:	Hastelloy
Valve seat:	PTFE
In- / outlet	3/8"-NPT female
Pressure gauge connect.	1/4"-NPT female
Leak rate	1×10^{-3} mbar l/s He
Weight	1,5 kg

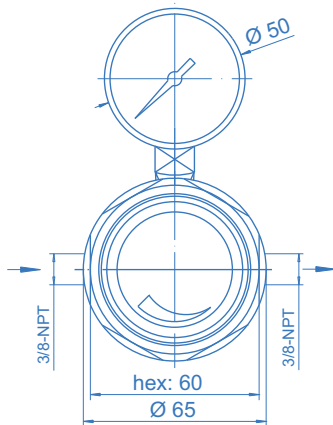
Flow curves LM71



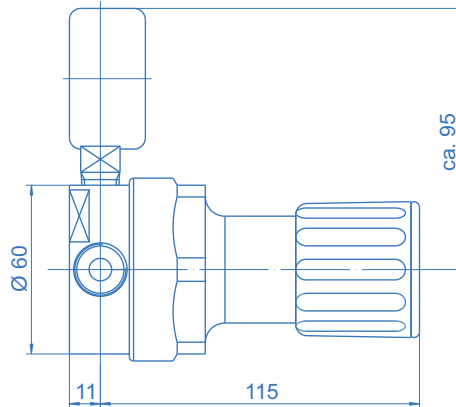
Line pressure regulator LM71

spectro lab

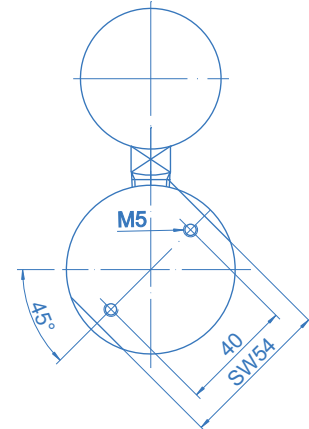
Dimensions - LM71



side view



rear view / mounting



Ordering information: LM71 series pressure regulators

LM71 - 50 - 10 - 0 - M - 0 - N₂

Inlet pressure P₁

50 - max. 50 bar

Outlet pressure P₂

1,5 - to 1,5 bar
4 - to 4 bar
10 - to 10 bar
20 - to 20 bar

Type of gas

Please specify type of gas!

Outlet press. indication

B - plug
M - pressure gauge
0 - 1/4"-NPT port

Specifications

- SPECTROLAB - components guarantee maximum quality by using high grade materials and a quality assurance program acc. to ISO 9001.
- All components which come into contact with the medium are cleaned in an ultrasonic cleaning system (CFC-free) with the special cleaning process SPECTRO-CLEAN® and are then baked out.
- SPECTROLAB - components undergo a 100% function- and Helium-leak-test.

Important note regarding component selection

- In order to assure safe operation it is essential to take the configuration of the whole system into account when selecting a control panel.
- The function of the components, the compatibility of the materials, correlating temperature ranges, correct installation, operation and maintenance in accordance with the relevant regulations are the responsibility of the system designer and the user.