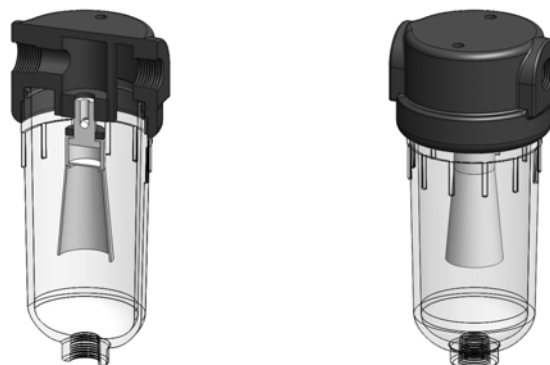


**Materials** Polyamide  
**Pressure** 10 Bar  
**Ports** 1/4" or 1/2"

NN212.F series float valve housings are based on our standard NN212 series and have a float valve to shut off the flow when collected liquids reach a certain level.

Float Valve housings are an essential filtration tool when gas is being drawn to an analyser or other instrument, preventing the carry-over of bulk liquids. Normally these are used after coalescing filter housing as a safety device.

Special and custom housings can also be supplied with internal arrangements to suit specific applications.



## Technical Specifications

| Housing Model                        | NN212.201.F | NN212.221.F | NN212.261.F | NN212.401.F | NN212.421.F | NN212.461.F |
|--------------------------------------|-------------|-------------|-------------|-------------|-------------|-------------|
| Port Size                            | 1/4" NPT    | 1/4" NPT    | 1/4" NPT    | 1/2" NPT    | 1/2" NPT    | 1/2" NPT    |
| Drain                                | None        | 1/4" NPT    | Manual      | None        | 1/4" NPT    | Manual      |
| Maximum Pressure, Bar                | 10          | 10          | 10          | 10          | 10          | 10          |
| Maximum Temperature, °C              | 50          | 50          | 50          | 50          | 50          | 50          |
| <b>Materials of Construction (1)</b> |             |             |             |             |             |             |
| Head, Bowl & Internals               | PA          | PA          | PA          | PA          | PA          | PA          |
| Seals (2)                            | Viton       | Viton       | Viton       | Viton       | Viton       | Viton       |
| <b>Principal Dimensions in mm</b>    |             |             |             |             |             |             |
| Diameter                             | 65          | 65          | 65          | 65          | 65          | 65          |
| Height                               | 147         | 147         | 159         | 147         | 147         | 159         |
| Volume, cc                           | 145         | 145         | 145         | 145         | 145         | 145         |
| Weight, kg                           | 0.2         | 0.2         | 0.2         | 0.2         | 0.2         | 0.2         |
| <b>Accessories</b>                   |             |             |             |             |             |             |
| Mounting Bracket                     | MBSS21      | MBSS21      | MBSS21      | MBSS21      | MBSS21      | MBSS21      |

### Notes

(1) Material abbreviations, PA = Polyamide

(2) Add suffix for other seal types, Chemraz = .C, Nitrile = N, Kalrez = .K, EPDM = .E, Silicone = .S, (e.g. NN212.221.E.F)