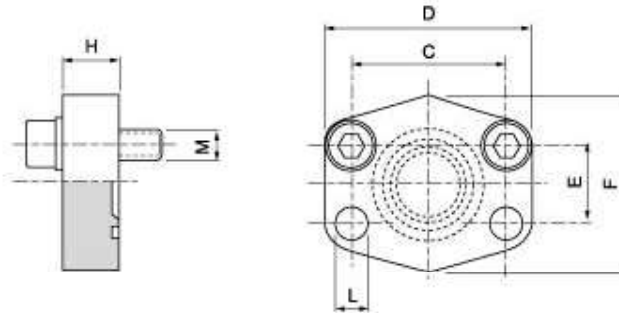


SAE J 518 C 61/62 Flanges

SAE - closed flange

SA AFC



Maximum recommended working pressure kg/cm ²	Nominal flange size, in	Type	Dimensions						Screws		Weight kg
			C	D	E	F	H	L	M		
									metr.	unc	
		Standard Pressure									
350	½"	SA AFC 308	38.10	56	17.48	48	16	9.0	M 8 x 30	⅜ x 1½	0.20
350	¾"	SA AFC 312	47.63	65	22.23	50	16	11.0	M 10 x 35	⅜ x 1½	0.30
350	1"	SA AFC 316	52.37	70	26.19	60	19	11.0	M 10 x 35	⅜ x 1½	0.37
280	1½"	SA AFC 320	58.72	79	30.18	68	18	11.5	M 10 x 40	⅜ x 1½	0.54
210	1½"	SA AFC 324	69.85	93	35.71	78	20	13.5	M 12 x 45	⅜ x 1½	0.90
210	2"	SA AFC 332	77.77	102	42.88	90	20	13.5	M 12 x 45	⅜ x 1½	1.00
175	2½"	SA AFC 340	88.90	114	50.80	105	20	13.5	M 12 x 45	⅜ x 1½	1.35
140	3"	SA AFC 348	106.38	134	61.93	124	24	17.0	M 16 x 50	⅜ x 2	2.35
35	3½"	SA AFC 356	120.65	152	69.85	136	22	17.0	M 16 x 50	⅜ x 2	2.90
35	4"	SA AFC 364	130.18	162	77.77	146	25	17.0	M 16 x 50	⅜ x 2	3.90
35	5"	SA AFC 380	152.40	190	92.08	170	28	17.0	M 16 x 50	⅜ x 2	4.00
		High Pressure									
420	½"	SA AFC 608	40.49	56	18.24	48	16	9.0	M 8 x 30	⅜ x 1½	0.20
420	¾"	SA AFC 612	50.80	71	23.80	60	19	11.0	M 10 x 35	⅜ x 1½	0.48
420	1"	SA AFC 616	57.15	81	27.76	70	24	12.5	M 12 x 45	⅜ x 1½	0.77
420	1¼"	SA AFC 620	66.68	95	31.75	78	27	14.5	M 14 x 45	⅜ x 1½	0.85
420	1½"	SA AFC 624	79.38	112	36.50	94	30	17.0	M 16 x 50	⅜ x 2	1.80
420	2"	SA AFC 632	96.82	134	44.45	114	28	21.0	M 20 x 65	⅜ x 2½	2.00
420	2½"	SA AFC 640	123.80	180	58.70	150	45	28.0	M 24 x 75	-	5.30