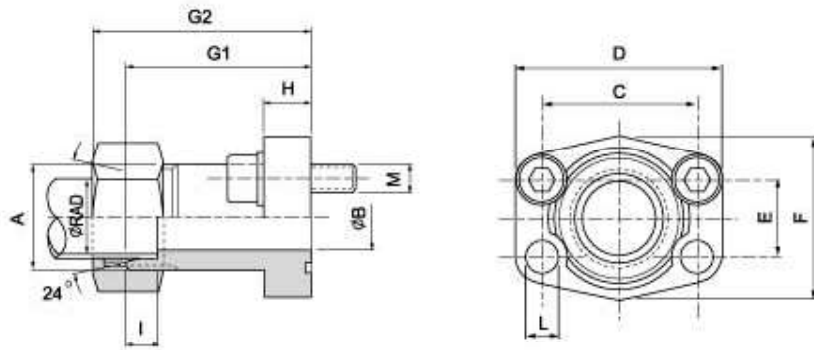


SAE J 518 C 61/62 Flanges

SAE - metric threaded flange DIN 3901/3902

SAAFG



Maximum recommended working pressure kg/cm ²	Nominal flange size, in	Type	Dimensions											Screws		Weight kg	
			A	B	C	D	E	F	G ₁	G ₂	H	I	L	M			
			metr.	unc.													
		Standard Pressure															
315	1/2"	SAAFG 308-15L	M 22 x 1.5	12	38.10	54	17.48	46	52	60	13	7.0	9.0	M 8 x 30	3/16 x 1 1/2	0.25	
160	3/8"	SAAFG 312-22L	M 30 x 2	19	47.63	65	22.23	50	60	69	14	7.5	11.0	M 10 x 30	3/8 x 1 1/2	0.35	
350	3/8"	SAAFG 312-20S	M 30 x 2	16	47.63	65	22.23	50	60	73	14	10.5	11.0	M 10 x 30	3/8 x 1 1/2	0.36	
160	1"	SAAFG 316-22L	M 30 x 2	19	52.37	70	26.19	55	63	72	16	7.5	11.0	M 10 x 30	3/8 x 1 1/2	0.44	
160	1"	SAAFG 316-28L	M 36 x 2	24	52.37	70	26.19	55	63	72	16	7.5	11.0	M 10 x 30	3/8 x 1 1/2	0.50	
350	1"	SAAFG 316-20S	M 30 x 2	16	52.37	70	26.19	55	63	76	16	10.5	11.0	M 10 x 30	3/8 x 1 1/2	0.46	
350	1"	SAAFG 316-25S	M 36 x 2	20	52.37	70	26.19	55	63	75	14	12.0	11.0	M 10 x 30	3/8 x 1 1/2	0.52	
160	1 1/2"	SAAFG 320-28L	M 36 x 2	24	58.72	79	30.18	68	65	74	14	7.5	11.5	M 10 x 35	3/16 x 1 1/2	0.68	
160	1 1/2"	SAAFG 320-35L	M 45 x 2	29	58.72	79	30.18	68	65	76	14	10.5	11.5	M 10 x 35	3/16 x 1 1/2	0.72	
280	1 1/2"	SAAFG 320-30S	M 42 x 2	25	58.72	81	30.18	68	65	78	14	13.0	11.5	M 10 x 35	3/16 x 1 1/2	0.70	
160	1 1/2"	SAAFG 324-40L	M 52 x 2	36	69.85	94	35.71	78	70	82	16	11.0	13.5	M 12 x 35	1/2 x 1 1/2	1.00	
210	1 1/2"	SAAFG 327-38S	M 52 x 2	32	69.85	94	35.71	78	70	82	16	10.0	13.5	M 12 x 35	1/2 x 1 1/2	1.02	
		High Pressure															
420	1/2"	SAAFG 608-16S	M 24 x 1.5	12	40.49	56	18.24	48	60	70	16	8.5	9.0	M 8 x 30	3/16 x 1 1/2	0.30	
420	3/8"	SAAFG 612-25S	M 36 x 2	19	50.80	71	23.80	60	73	85	19	12.0	11.0	M 10 x 35	3/8 x 1 1/2	0.68	
420	1"	SAAFG 616-30S	M 42 x 2	25	57.15	81	27.76	70	82	95	24	13.5	12.5	M 12 x 45	3/16 x 1 1/2	1.00	
420	1 1/2"	SAAFG 620-38S	M 52 x 2	29	66.68	95	31.75	78	92	107	27	16.0	14.5	M 14 x 50	1/2 x 1 1/2	1.60	
420	1 1/2"	SAAFG 620-30S	M 42 x 2	25	66.68	95	31.75	78	92	106	27	13.5	14.5	M 14 x 50	1/2 x 1 1/2	1.54	
420	1 1/2"	SAAFG 624-38S	M 52 x 2	32	79.38	113	36.50	95	96	111	30	16.0	17.0	M 16 x 50	5/8 x 2	2.20	