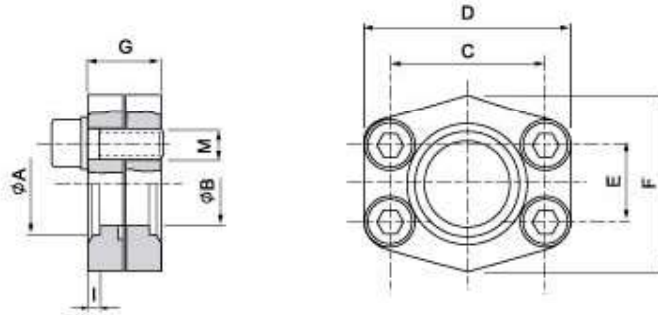


## SAE J 518 C 61/62 Flanges

SAE - socket weld flange 500 psi - companion

### SADFC - SW



Maximum recommended working pressure kg/cm <sup>2</sup>	Nominal flange size, in	Type	Nominal pipe size	Dimensions								Screws M	Weight kg
				A	B	C	D	E	F	G	I		
		<b>Standard Pressure</b>											
40	½"	SADFC 08 SW	21.3 x 3.7	21.6	13	38.10	56	17.48	46	10	3	M 8 x 25	0.24
40	¾"	SADFC 12 SW	26.7 x 3.9	27.2	19	47.63	65	22.23	50	12	4	M 10 x 30	0.40
40	1"	SADFC 16 SW	33.4 x 4.5	34.0	25	52.37	70	26.19	55	12	4	M 10 x 30	0.50
40	1¼"	SADFC 20 SW	42.2 x 4.9	42.8	32	58.72	79	30.18	68	12	4	M 10 x 30	0.62
40	1½"	SADFC 24 SW	48.3 x 5.1	48.6	38	69.85	93	35.71	78	15	4	M 12 x 35	1.00
40	2"	SADFC 32 SW	60.3 x 5.5	61.0	51	77.77	102	42.88	90	15	4	M 12 x 35	1.18
40	2½"	SADFC 40 SW	73.0 x 7.0	73.5	63	88.90	114	50.80	105	15	4	M 12 x 35	1.44
40	3"	SADFC 48 SW	88.9 x 7.6	90.5	76	106.38	134	61.93	124	20	5	M 16 x 40	2.50
40	3½"	SADFC 56 SW	101.5 x 8.1	103.0	89	120.65	152	69.85	136	20	5	M 16 x 40	3.00
40	4"	SADFC 64 SW	114.3 x 8.6	115.0	102	130.18	162	77.77	146	25	6	M 16 x 45	4.30
40	5"	SADFC 80 SW	141.3 x 9.5	143.0	127	152.40	190	92.08	170	28	8	M 16 x 45	6.00