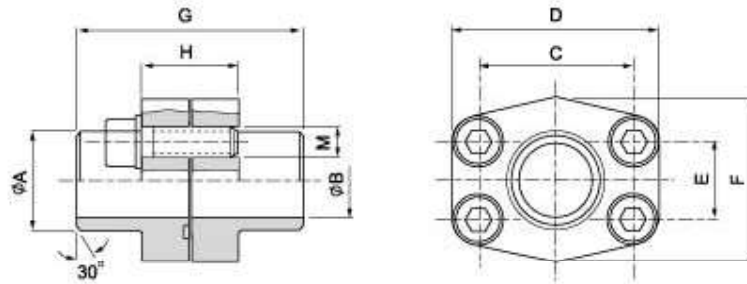


SAE J 518 C 61/62 Flanges

SAE - weld on coupling

SADFS - BW



Maximum recommended working pressure kg/cm ²	Nominal flange size, in	Type	Dimensions								Screws		Weight kg
			A	B	C	D	E	F	G	H	M		
											metr.	unc	
Standard Pressure													
350	½"	SADFS 308-08 BW	21.6	13	38.10	54	17.48	46	72	32	M 8 x 30	⅝ x 1½	0.56
350	¾"	SADFS 312-12 BW	27.2	19	47.63	65	22.23	50	72	36	M 10 x 35	⅝ x 1½	0.78
350	1"	SADFS 316-16 BW	34.0	25	52.37	70	26.19	55	78	36	M 10 x 35	⅝ x 1½	0.92
280	1½"	SADFS 320-20 BW	42.8	32	58.72	79	30.18	68	82	42	M 10 x 40	⅝ x 1½	1.32
210	1½"	SADFS 324-24 BW	48.6	38	69.85	93	35.71	78	88	50	M 12 x 45	⅝ x 1½	2.10
210	2"	SADFS 332-32 BW	61.0	51	77.77	102	42.88	90	90	50	M 12 x 45	⅝ x 1½	2.38
175	2½"	SADFS 340-40 BW	73.5	63	88.90	114	50.80	105	100	50	M 12 x 45	⅝ x 1½	2.80
140	3"	SADFS 348-48 BW	90.5	76	106.38	134	61.93	124	100	54	M 16 x 50	⅝ x 2	4.30
35	3½"	SADFS 356-56 BW	103.0	89	120.65	152	69.85	136	96	54	M 16 x 50	⅝ x 2	4.80
35	4"	SADFS 364-64 BW	115.0	102	130.18	162	77.77	146	96	54	M 16 x 50	⅝ x 2	5.70
35	5"	SADFS 380-80 BW	143.0	127	152.40	184	92.08	180	100	56	M 16 x 55	⅝ x 2	10.00
High Pressure													
420	½"	SADFS 608-08 BW	21.6	13	40.49	54	18.24	46	72	32	M 8 x 30	⅝ x 1½	0.56
420	¾"	SADFS 612-12 BW	27.2	19	50.80	71	23.80	55	70	42	M 10 x 35	⅝ x 1½	0.78
420	1"	SADFS 616-16 BW	34.0	25	57.15	79	27.76	68	82	42	M 12 x 45	⅝ x 1½	0.92
420	1½"	SADFS 620-20 BW	42.8	32	66.68	95	31.75	78	88	48	M 14 x 45	⅝ x 1½	1.32
420	1½"	SADFS 624-24 BW	48.6	38	79.38	114	36.50	94	110	60	M 16 x 50	⅝ x 2	2.38
420	2"	SADFS 632-32 BW	61.0	51	96.82	134	44.45	114	130	74	M 20 x 65	⅝ x 2½	4.30
420	2½"	SADFS 640-40 BW	73.5	61	123.80	180	58.70	152	160	90	M 24 x 75	-	5.70