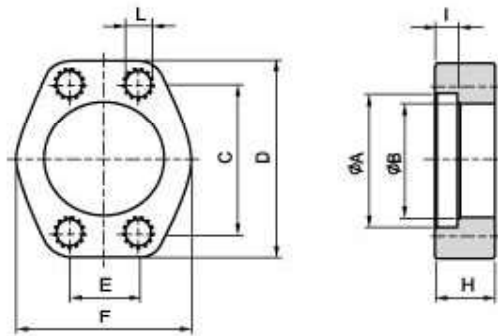


SAE J 518 C 61/62 Flanges

SAE-flange clamp with tapped holes- flat

SAEFGB



Maximum recommended working pressure kg/cm ²	Nominal flange size, in	Type	Dimensions								Screws		Weight kg
			A	B	C	D	E	F	H	I	M		
											metr.	unc	
		Standard Pressure											
350	½"	SAEFGB04-61	30.96	24.26	38.10	54	17.48	45.6	20	6.22	M 8 x 35	⅝ x 1½	0.18
350	¾"	SAEFGB06-61	38.89	32.13	47.63	65	22.23	51.8	20	6.22	M 10 x 35	⅝ x 1½	0.20
350	1"	SAEFGB08-61	45.24	38.48	52.37	70	26.19	58.4	22	7.49	M 10 x 35	⅝ x 1½	0.26
420	1"	SAEFGB308-62	45.24	38.48	52.37	71	26.19	60.0	25	7.49	M 10 x 45	-	0.52
280	1½"	SAEFGB10-61	51.59	43.69	58.72	79	30.18	72.6	22	7.49	M 12 x 45	⅝ x 1½	0.36
420	1½"	SAEFGB310-62	51.59	43.69	58.72	80	30.18	73.0	30	7.49	M 12 x 50	-	0.77
280	1½"	SAEFGB12-61	61.09	50.80	69.85	94	35.71	82.2	25	7.49	M 12 x 45	½ x 1½	0.54
420	1½"	SAEFGB312-62	61.09	50.80	69.85	95	35.71	83.0	33	7.49	M 12 x 60	-	1.15
280	2"	SAEFGB16-61	72.24	62.74	77.77	102	42.88	96.4	30	9.02	M 12 x 50	½ x 1½	0.60
420	2"	SAEFGB316-62	72.24	62.74	77.77	103	42.88	97.0	38	9.02	M 12 x 70	-	1.66
210	2½"	SAEFGB20-61	84.94	74.93	88.90	114	50.80	108.2	36	9.02	M 12 x 60	½ x 1½	0.89
420	2½"	SAEFGB320-62	84.94	74.93	88.90	114	50.80	108.2	45	9.02	M 14 x 75	-	2.10
210	3"	SAEFGB24-61	102.39	90.93	106.38	135	61.93	130.6	41	9.02	M 16 x 70	⅝ x 2	1.56
160	3½"	SAEFGB28-61	115.10	102.36	120.65	152	69.85	139.0	28	10.72	M 16 x 50	⅝ x 2	1.80
160	4"	SAEFGB32-61	127.79	115.06	130.18	162	77.77	152.0	35	10.72	M 16 x 60	⅝ x 2	1.98
35	5"	SAEFGB40-61	153.19	140.46	152.40	184	92.08	180.0	41	10.72	M 16 x 70	⅝ x 2	3.00
		High Pressure											
420	½"	SAEFGB04-62	32.54	24.26	40.49	56	18.24	47.2	22	7.24	M 8 x 35	⅝ x 1½	0.19
420	¾"	SAEFGB06-62	42.06	32.51	50.80	71	23.80	60.0	23	8.26	M 10 x 40	⅝ x 1½	0.42
420	1"	SAEFGB08-62	48.41	38.86	57.15	81	27.76	69.9	25	9.02	M 12 x 45	-	0.64
420	1½"	SAEFGB10-62	54.76	44.45	66.68	95	31.75	77.2	30	9.78	M 14 x 50	½ x 1½	0.96
420	1½"	SAEFGB12-62	64.29	51.56	79.38	113	36.50	95.0	33	12.07	M 16 x 60	⅝ x 2	1.62
420	2"	SAEFGB16-62	80.16	67.56	96.82	133	44.45	113.8	38	12.07	M 20 x 70	⅝ x 2½	2.52
420	2½"	SAEFGB20-62	108.90	90.00	123.80	180	58.80	190.2	45	20.50	M 24 x 75	-	4.92
420	3"	SAEFGB24-62	132.50	115.00	152.40	215	71.60	198.16	55	25.50	M 30 x 90	-	10.32