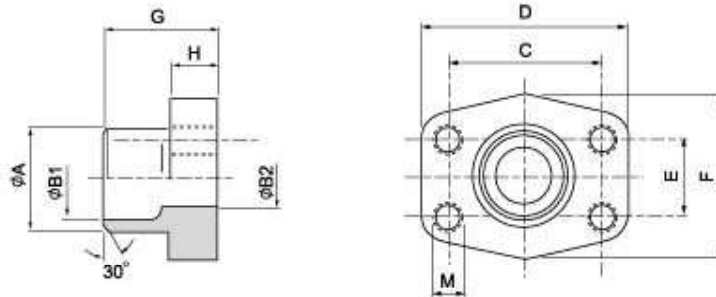


SAE J 518 C 61/62 Flanges

SAE - weld on flange - metric tubes - companion

SAGFS - M



Maximum recommended working pressure kg/cm ²	Nominal flange size, in	Type	Dimensions											Weight kg
			A	B ₁	B ₂	C	D	E	F	G	H	M		
Standard Pressure														
350	½"	SAGFS 308-20 M	20 x 3	20	14	14	38.10	54	17.48	46	35.0	16	M 8	0.28
350	½"	SAGFS 308-22 M	22 x 3	22	16	13	38.10	54	17.48	46	35.0	16	M 8	0.28
350	¾"	SAGFS 312-25 M	25 x 3	25	19	19	47.63	65	22.23	50	36.0	18	M 10	0.39
350	¾"	SAGFS 312-28 M	28 x 3	28	22	19	47.63	65	22.23	50	36.0	18	M 10	0.39
350	1"	SAGFS 316-30 M	30 x 4	30	22	22	52.37	70	26.19	55	38.0	18	M 10	0.46
350	1"	SAGFS 316-35 M	35 x 4	35	27	25	52.37	70	26.19	55	38.0	18	M 10	0.47
280	1½"	SAGFS 320-38 M	38 x 4	38	30	30	58.72	79	30.18	68	41.0	21	M 10	0.66
280	1½"	SAGFS 320-42 M	42 x 3	43	36	31	58.72	79	30.18	68	41.0	21	M 10	0.66
210	1½"	SAGFS 324-38 M	38 x 4	38	30	30	69.85	93	35.71	78	44.5	25	M 12	1.05
210	1½"	SAGFS 324-42 M	42 x 3	42	36	36	69.85	93	35.71	78	44.5	25	M 12	1.05
High Pressure														
420	½"	SAGFS 608-20 M	20 x 3	20	14	14	40.49	54	18.24	46	34.0	16	M 8	0.29
420	¾"	SAGFS 612-20 M	20 x 3	20	14	14	50.80	71	23.80	55	35.0	21	M 10	0.50
420	¾"	SAGFS 612-25 M	25 x 4	25	17	17	50.80	71	23.80	55	35.0	21	M 10	0.53
420	1"	SAGFS 616-25 M	25 x 4	25	17	17	57.15	81	27.76	65	42.0	25	M 12	0.76
420	1"	SAGFS 616-30 M	30 x 4	30	22	22	57.15	81	27.76	65	42.0	25	M 12	0.80
420	1½"	SAGFS 620-30 M	30 x 4	30	22	22	66.68	95	31.75	78	44.0	25	M 12	1.20
420	1½"	SAGFS 620-38 M	38 x 6	38	26	26	66.68	95	31.75	78	44.0	25	M 12	1.29
420	1½"	SAGFS 624-38 M	38 x 6	38	26	26	79.38	112	36.50	94	56.0	28	M 16	1.52