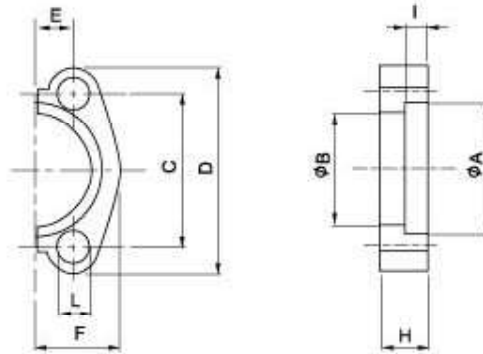


# SAE J 518 C 61/62 Flanges

SAE - split flanges halves - flat

## SAHF



Maximum recommended working pressure kg/cm <sup>2</sup>	Nominal flange size, in	Type	Dimensions								Screws		Weight kg	
			A	B	C	D	E	F	H	L	metr.	unc		
		<b>Standard Pressure</b>												
350	½"	SAHF 308	30.96	24.26	38.10	54	8.74	22.8	13	9.0	M 8x25	⅝ x 1½	0.06	
350	¾"	SAHF 312	38.89	32.13	47.63	65	11.13	25.9	14	11.0	M 10x30	⅝ x 1½	0.07	
350	1"	SAHF 316	45.24	38.48	52.37	70	13.08	29.2	16	11.0	M 10x30	⅝ x 1½	0.10	
280	1¼"	SAHF 320	51.59	43.69	58.72	79	15.09	36.6	16	11.5	M 10x35	⅝ x 1½	0.15	
210	1½"	SAHF 324	61.09	50.80	69.85	94	17.86	41.1	16	13.5	M 12x35	⅝ x 1½	0.18	
210	2"	SAHF 332	72.24	62.74	77.77	102	21.44	48.2	16	13.5	M 12x35	⅝ x 1½	0.22	
		<b>High Pressure</b>												
420	½"	SAHF 608	32.54	24.64	40.49	56	9.12	23.6	16	9.0	M 8x30	⅝ x 1½	0.08	
420	¾"	SAHF 612	42.06	32.51	50.80	71	11.91	30.0	20	11.0	M 10x35	⅝ x 1½	0.16	
420	1"	SAHF 616	48.41	38.86	57.15	81	13.89	34.8	25	12.5	M 12x45	⅝ x 1½	0.25	
420	1¼"	SAHF 620	54.76	44.45	66.68	95	15.88	38.6	27	14.5	M 14x45	⅝ x 1½	0.34	
420	1½"	SAHF 624	64.29	51.56	79.38	113	19.26	47.5	30	17.0	M 16x50	⅝ x 2	0.55	
420	2"	SAHF 632	80.16	67.56	96.82	133	22.23	56.9	37	21.0	M 20x65	⅝ x 2½	1.02	
420	2½"	SAHF 640	108.90	90.00	123.80	180	29.40	75.08	45	26.0	M 24x75	-	2.05	
420	3"	SAHF 648	132.50	115.00	152.40	215	35.80	99.08	55	31.0	M 30x90	-	4.30	