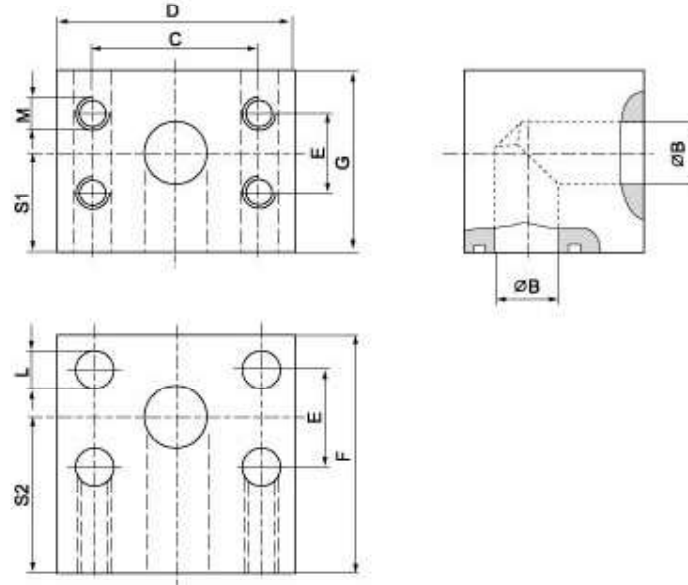


SAE J 518 C 61/62 Flanges

SAE - 90° L - Block

SAL - GD



Maximum recommended working pressure kg/cm ²	Nominal flange size, in	Type	Dimensions										Weight kg
			B	C	D	E	F	G	L	M	S1	S2	
		Standard Pressure											
350	½"	SAL-GD 308	13	38.10	55	17.48	55	50	9.0	M 8	25.0	35	1.0
350	¾"	SAL-GD 312	19	47.65	65	23.25	60	60	11.0	M 10	30.0	40	1.2
350	1"	SAL-GD 316	24	52.40	72	26.20	65	65	11.0	M 10	33.0	40	1.9
280	1¼"	SAL-GD 320	32	58.72	82	30.18	82	80	11.5	M 10	39.0	38	3.5
210	1½"	SAL-GD 324	38	69.85	98	35.71	92	92	13.5	M 12	51.0	59	5.0
210	2"	SAL-GD 332	46	77.77	102	42.88	85	87	13.5	M 12	51.0	48	7.9
175	2½"	SAL-GD 340	62	88.90	115	50.80	110	120	13.5	M 12	60.0	65	8.6
140	3"	SAL-GD 348	73	106.38	135	61.93	150	135	17.0	M 16	67.5	90	10.5
		High Pressure											
420	½"	SAL-GD 608	13	40.50	60	18.25	60	50	9.0	M 8	25.0	40	1.0
420	¾"	SAL-GD 612	19	50.80	72	23.80	60	55	11.0	M 10	32.0	36	1.4
420	1"	SAL-GD 616	23	57.15	82	27.76	68	64	13.0	M 12	37.0	40	2.3
420	1¼"	SAL-GD 620	30	66.68	96	31.75	76	72	15.0	M 14	41.0	46	3.3
420	1½"	SAL-GD 624	38	79.38	114	36.50	86	89	17.0	M 16	50.0	52	5.4
420	2"	SAL-GD 632	50	96.82	133	44.45	110	105	21.0	M 20	59.0	70	9.0
420	2½"	SAL-GD 640	62	123.80	180	58.80	160	155	26.0	M 24	77.5	90	14.6