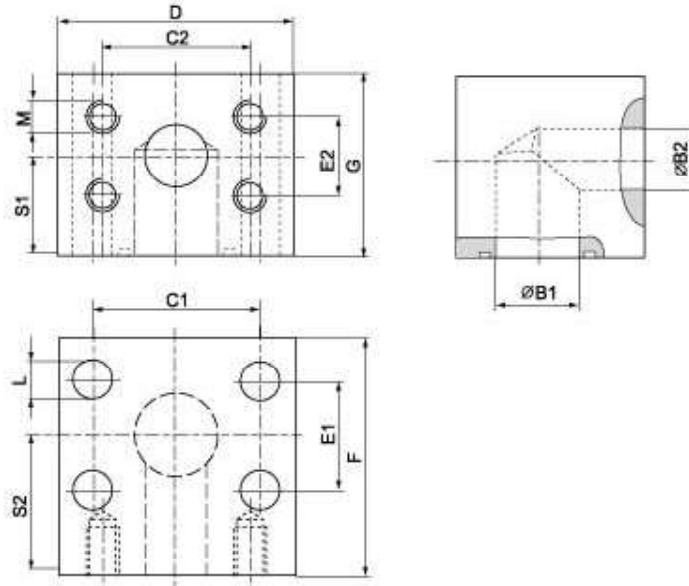


SAE J 518 C 61/62 Flanges

SAE - 90° L - reduction

SARED - GD



Maximum recommended working pressure kg/cm ²	Nominal flange size, in	Type	Dimensions													Weight kg
			B1	B2	C1	C2	D	E1	E2	F	G	L	M	S1	S2	
		High Pressure														
420	1"	SARED-GD 616-08	23	19	57.15	50.80	82	27.76	23.80	68	64	13	M 10	37	40	2.8
420	1 1/8"	SARED-GD 620-08	30	19	66.68	50.80	96	31.75	23.80	72	72	15	M 10	41	46	3.6
420	1 1/4"	SARED-GD 620-12	30	23	66.68	57.15	96	31.75	27.76	76	72	15	M 12	41	46	3.3
420	1 1/2"	SARED-GD 624-20	38	30	79.38	66.68	114	36.50	31.75	86	89	17	M 14	50	52	5.7
420	2"	SARED-GD 632-24	50	38	96.82	79.38	133	44.45	36.50	110	105	21	M 16	63	70	9.0