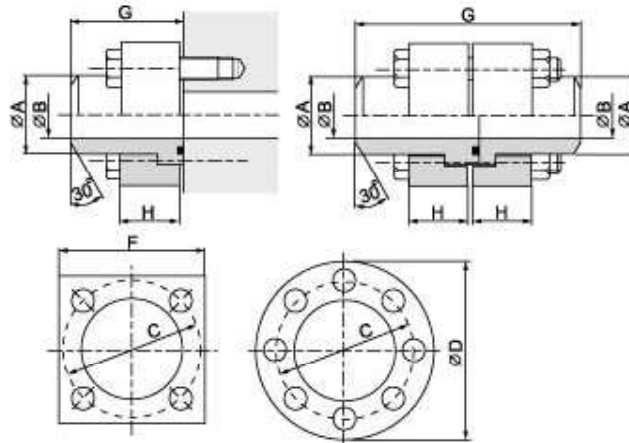


ISO 6164 Flanges

Butt weld centering flange - PN 400 - ISO 6164 - 2

SAVKA / VKK 40



Maximum recommended working pressure kg/cm ²	DN	Type	Dimensions							Screws	O-Ring	Weight kg	
			A	B	C	F	D	H	G				
		Weld-on flange											
400	½"	SAVKA4008	21.3 x 7.5	6	42	45			20	50	4 x M 8 x 35	20.0 x 2.65	0.70
400	¾"	SAVKA4012	26.7 x 7.8	11	54	60			20	50	4 x M10 x 35	23.6 x 3.55	0.90
400	1"	SAVKA4016	33.4 x 9.1	15	62	65			25	56	4 x M10 x 40	25.0 x 3.55	1.45
400	1 ¼"	SAVKA4020	42.2 x 9.7	23	73	75			32	64	4 x M12 x 50	31.5 x 3.55	2.20
400	1 ½"	SAVKA4024	48.3 x 10.2	28	85	90			34	68	4 x M14 x 50	37.5 x 3.55	2.20
400	2"	SAVKA4026	60.3 x 11.1	38	98	100			40	80	4 x M16 x 60	43.7 x 5.30	3.20
400	2 ½"	SAVKA4040	73.0 x 14.0	45	118	120			50	98	4 x M20 x 70	56.0 x 5.30	5.60
400	3"	SAVKA4048	88.9 x 15.2	59	145	150			54	109	4 x M24 x 75	65.0 x 5.30	9.50
400	3 ½"	SAVKA4056	101.5 x 20.0	61	160	160			58	135	4 x M24 x 90	71.0 x 5.30	17.60
400	4"	SAVKA4064	114.3 x 17.1	80	175	180			65	135	4 x M30 x 95	90.0 x 5.30	17.60
400	5"	SAVKA4080	141.3 x 19.0	103	200			245	70	150	8 x M24 x 100	115.0 x 6.0	29.30
400	6"	SAVKA4096	168.3 x 22.0	124	245			300	80	190	8 x M30 x 110	148.0 x 7.0	48.20
400	8"	SAVKA40128	219.1 x 22.2	175	290			355	90	190	8 x M36 x 130	183.5 x 7.0	55.10
		Weld-on flange coupling											
400	½"	SAVKK4008	21.3 x 7.5	6	42	45			20	101	4 x M 8 x 60	20.0 x 2.65	1.40
400	¾"	SAVKK4012	26.7 x 7.8	11	54	60			20	101	4 x M10 x 60	23.6 x 3.55	1.80
400	1"	SAVKK4016	33.4 x 9.1	15	62	65			25	113	4 x M10 x 60	25.0 x 3.55	2.90
400	1 ¼"	SAVKK4020	42.2 x 9.7	23	73	75			32	129	4 x M12 x 80	31.5 x 3.55	4.40
400	1 ½"	SAVKK4024	48.3 x 10.2	28	85	90			34	137	4 x M14 x 85	37.5 x 3.55	4.40
400	2"	SAVKK4026	60.3 x 11.1	38	98	100			40	161	4 x M16 x 100	43.7 x 5.30	6.40
400	2 ½"	SAVKK4040	73.0 x 14.0	45	118	120			50	197	4 x M20 x 130	56.0 x 5.30	11.20
400	3"	SAVKK4048	88.9 x 15.2	59	145	150			54	219	4 x M24 x 150	65.0 x 5.30	19.00
400	3 ½"	SAVKA4056	101.5 x 20.0	61	160	160			58	271	4 x M24 x 150	71.0 x 5.30	35.20
400	4"	SAVKK4064	114.3 x 17.1	80	175	180			65	271	4 x M30 x 160	90.0 x 5.30	35.20
400	5"	SAVKK4080	141.3 x 19.0	103	200			245	70	301	8 x M24 x 170	115.0 x 6.0	58.60
400	6"	SAVKK4096	168.3 x 22.0	124	245			300	80	380	8 x M30 x 200	148.0 x 7.0	96.40
400	8"	SAVKK40128	219.1 x 22.2	175	290			355	90	380	8 x M36 x 220	183.5 x 7.0	110.20