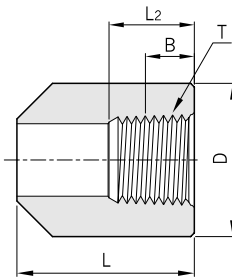
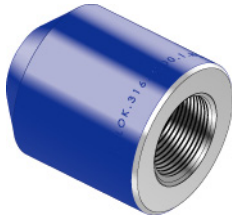
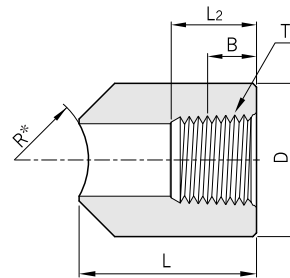


Pipe Fittings

Boss Type A SBA



Boss Type R SBR



ASME B16.11

Fittings Pressure Class	Nom. Pipe Size	DN	Outside Diameter D	L	Min. Length of Thread ⁽¹⁾	
					B	L ₂
3000	1/4	8	19	40	8.1	10.2
	3/8	10	22	40	9.1	10.4
	1/2	15	28	50	10.9	13.6
	3/4	20	35	50	12.7	13.9
	1	25	44	50	14.7	17.3
	1 1/4	32	57	50	17.0	18.0
	1 1/2	40	64	50	17.8	18.4
	2	50	76	60	19.0	19.2
6000	1/2	15	38	50	10.9	13.6
	3/4	20	44	50	12.7	13.9
	1	25	57	50	14.7	17.3
	1 1/4	32	64	50	17.0	18.0
	1 1/2	40	76	60	17.8	18.4
	2	50	92	60	19.0	19.2

Note : * is run pipe sizes

Example : SBR06N-3000-R34 / S316 - 3/4" NPS CL3000 Run pipe 34.0mmO.D

(1) Dimension B is minimum length of perfect thread. The length of useful thread(B plus threads with fully formed roots and flat crests) shall not be less than L₂ (effective length of external thread) required by American national standard for pipe threads (ASME B1.20.1)

All dimensions are in millimeters.