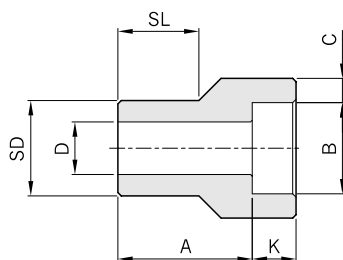
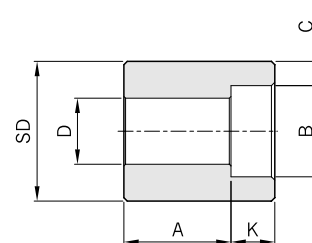


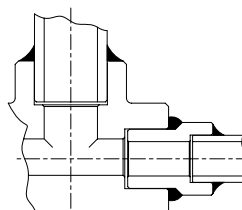
Reducing Insert
SWRM



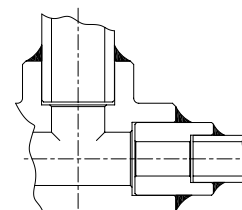
Type.1



Type.2



Applied View



Applied View

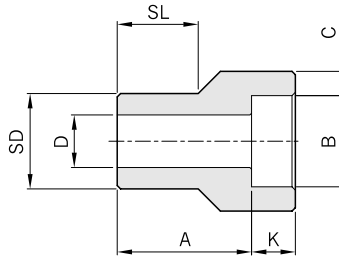
MSS SP-79

Class Designation of Fittings	Nominal Pipe Size	Type	Socket		Shank Dia. SD	Laying Length A	Bore D	Wall MIN. C	Length
			Dia. B	Depth Min. K					SL
3000	3/8 x 1/4	1	14.35	10	17.15	19	9.0	3.78	14
	1/2 x 1/4	1	14.35	10	21.34	21	9.0	3.78	16
	x 3/8	1	17.78	10	21.34	21	12.5	4.01	16
	3/4 x 1/4	2	14.35	10	26.67	18	9.0	3.78	-
	x 3/8	2	17.78	10	26.67	16	12.5	4.01	-
	x 1/2	1	21.97	10	26.67	22	16.0	4.67	17
	1 x 3/8	2	17.78	10	33.40	18	12.5	4.01	-
	x 1/2	2	21.97	10	33.40	16	16.0	4.67	-
	x 3/4	1	27.31	13	33.40	24	21.0	4.90	19
	1 1/4 x 1/2	2	21.97	10	42.16	19	16.0	4.67	-
	x 3/4	2	27.31	13	42.16	18	21.0	4.90	-
	x 1	1	34.04	13	42.16	25	26.5	5.69	21
	1 1/2 x 3/4	2	27.31	13	48.26	19	21.0	4.90	-
	x 1	2	34.04	13	48.26	18	26.5	5.69	-
	x 1 1/4	1	42.80	13	48.26	28	35.0	6.07	22
	2 x 1	2	34.04	13	60.32	22	26.5	5.69	-
	x 1 1/4	2	42.80	13	60.32	21	35.0	6.07	-
	x 1 1/2	1	48.90	13	60.32	32	41.0	6.35	25

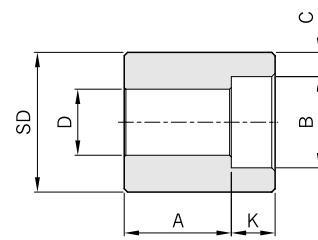
All dimensions are in millimeters.

Pipe Fittings

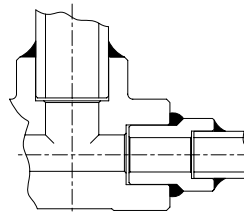
Reducing Insert **SWRM**



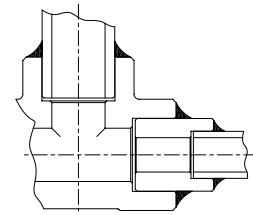
Type.1



Type.2



Applied View



Applied View

MSS SP-79

Class Designation of Fittings	Nominal Pipe Size	Type	Socket		Shank DIA. SD	Laying Length A	Bore D	Wall MIN. C	Length
			DIA. B	Depth Min. K					SL
6000	3/8 x 1/4	1	14.35	13	26.67	25	11.5	5.97	19
	1 x 1/2	1	21.97	13	33.40	28	11.5	5.97	21
	x 3/4	1	27.31	13	33.40	28	15.5	6.96	21
	1 1/4 x 1/2	2	21.97	13	42.16	22	11.5	5.97	-
	x 3/4	2	27.31	13	42.16	21	15.5	6.96	-
	x 1	1	34.04	13	42.16	30	20.5	7.92	22
	1 1/2 x 3/4	2	27.31	13	48.26	25	15.5	6.96	-
	x 1	1	34.04	13	48.26	29	20.5	7.92	25
	x 1 1/4	1	42.80	13	48.26	35	29.5	7.92	25
	2 x 1	2	34.04	13	60.32	25	21.0	7.92	-
	x 1 1/4	2	42.80	13	60.32	24	29.5	7.92	-
	x 1 1/2	1	48.90	13	60.32	39	34.0	8.90	28

All dimensions are in millimeters.