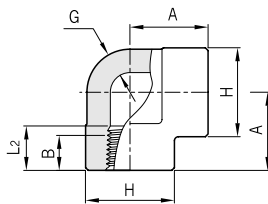
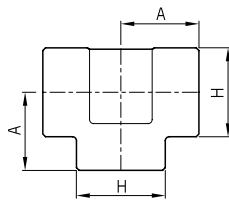


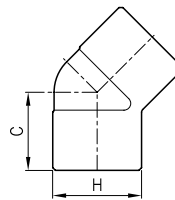
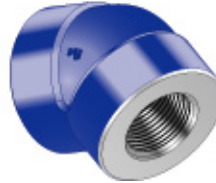
90° Elbow
SLA



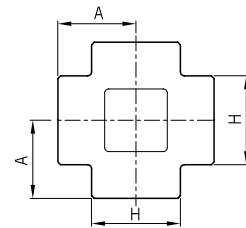
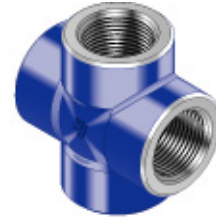
Tee
STA



45° Elbow
SLB



Cross
SXA



ASME B16.11

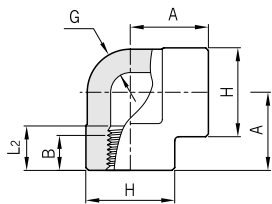
Class Designation of Fittings	Nom. Pipe Size	DN	Center to End Elbows, Tees Crosses A	Center to End 45° Elbows C	Outside Diameter of Band H	Min. Wall Thickness G	Min. Length of Thread ⁽¹⁾	
							B	L ₂
2000	1/8	6	21	17	22	3.18	6.4	6.7
	1/4	8	21	17	22	3.18	8.1	10.2
	3/8	10	25	19	25	3.18	9.1	10.4
	1/2	15	28	22	33	3.18	10.9	13.6
	3/4	20	33	25	38	3.18	12.7	13.9
	1	25	38	28	46	3.68	14.7	17.3
	1 1/4	32	44	33	56	3.89	17.0	18.0
	1 1/2	40	51	35	62	4.01	17.8	18.4
	2	50	60	43	75	4.27	19.0	19.2
	2 1/2	65	76	52	92	5.61	23.6	28.9
	3	80	86	64	109	5.99	25.9	30.5
4	100	106	79	146	6.55	27.7	33.0	

Note : (1) Dimension B is minimum length of perfect thread. The length of useful thread (B plus threads with fully formed roots and flat crests) shall not be less than L₂ (effective length of external thread) required by American National Standard for pipe threads (ASME B1.20.1)

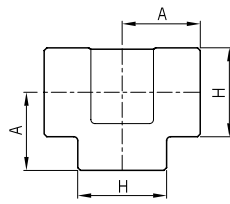
All dimensions are in millimeters.

Pipe Fittings

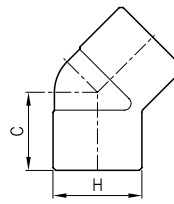
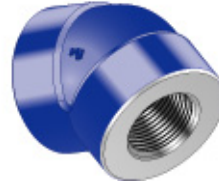
90° Elbow
SLA



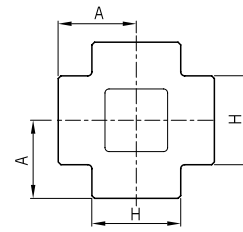
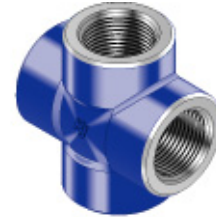
Tee
STA



45° Elbow
SLB



Cross
SXA



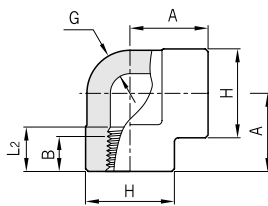
ASME B16.11

Class Designation of Fittings	Nom. Pipe Size	DN	Center to End Elbows, Tees Crosses A	Center to End 45° Elbows C	Outside Diameter of Band H	Min. Wall Thickness G	Min. Length of Thread ⁽¹⁾	
							B	L ₂
3000	1/8	6	21	17	22	3.18	6.4	6.7
	1/4	8	25	19	25	3.30	8.1	10.2
	3/8	10	28	22	33	3.51	9.1	10.4
	1/2	15	33	25	38	4.09	10.9	13.6
	3/4	20	38	28	46	4.32	12.7	13.9
	1	25	44	33	56	4.98	14.7	17.3
	1 1/4	32	51	35	62	5.28	17.0	18.0
	1 1/2	40	60	43	75	5.56	17.8	18.4
	2	50	64	44	84	7.14	19.0	19.2
	2 1/2	65	83	52	102	7.65	23.6	28.9
	3	80	95	64	121	8.84	25.9	30.5
4	100	114	79	152	11.18	27.7	33.0	

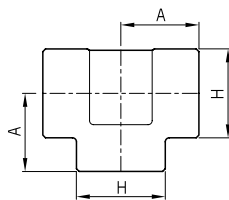
Note : (1) Dimension B is minimum length of perfect thread. The length of useful thread (B plus threads with fully formed roots and flat crests) shall not be less than L₂ (effective length of external thread) required by American National Standard for pipe threads (ASME B1.20.1)

All dimensions are in millimeters.

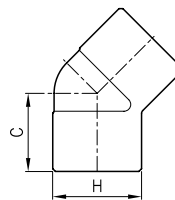
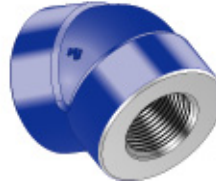
90° Elbow
SLA



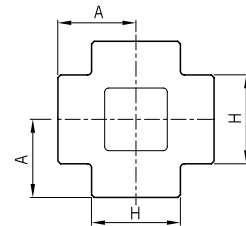
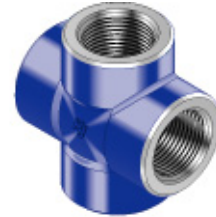
Tee
STA



45° Elbow
SLB



Cross
SXA



ASME B16.11

Class Designation of Fittings	Nom. Pipe Size	DN	Center to End Elbows, Tees Crosses A	Center to End 45° Elbows C	Outside Diameter of Band H	Min. Wall Thickness G	Min. Length of Thread ⁽¹⁾	
							B	L ₂
6000	1/8	6	25	19	25	6.35	6.4	6.7
	1/4	8	28	22	33	6.60	8.1	10.2
	3/8	10	33	25	38	6.98	9.1	10.4
	1/2	15	38	28	46	8.15	10.9	13.6
	3/4	20	44	33	56	8.53	12.7	13.9
	1	25	51	35	62	9.93	14.7	17.3
	1 1/4	32	60	43	75	10.59	17.0	18.0
	1 1/2	40	64	44	84	11.07	17.8	18.4
	2	50	83	52	102	12.09	19.0	19.2
	2 1/2	65	95	64	121	15.29	23.6	28.9
	3	80	106	79	146	16.64	25.9	30.5
4	100	114	79	152	18.67	27.7	33.0	

Note: (1) Dimension B is minimum length of perfect thread. The length of useful thread (B plus threads with fully formed roots and flat crests) shall not be less than L₂ (effective length of external thread) required by American National Standard for pipe threads (ASME B1.20.1)

All dimensions are in millimeters.