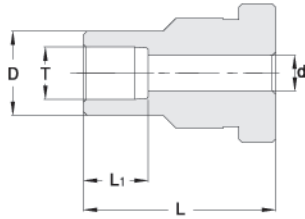
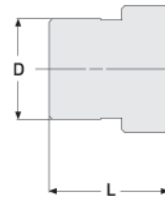


# Hy-Lok ZCO O-Ring Face Seal Fittings

## Socket weld Reducing Gland



## Blind Gland



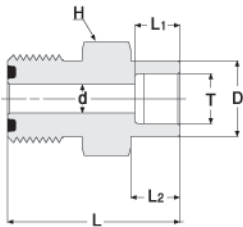
Part Number	ZCO Size in	T Tube O.D.	D	d	L	L <sub>1</sub>	Working Pressure	
			in. (mm)				psig	bar
H-ZCOSWRG4-2	1/4	1/8"	0.29 (7.37)	0.09 (2.29)	0.77 (19.56)	0.10 (2.54)	12600	860
H-ZCOSWRG8-4	1/2	1/4"	0.48 (12.19)	0.18 (4.57)	0.81 (20.57)	0.28 (7.11)	10700	730

Part Number	ZCO Size in	D	L
		in. (mm)	
H-ZCOBG- 4	1/4	0.38 ( 9.65)	0.44 (11.18)
H-ZCOBG- 8	1/2	0.60 (15.24)	0.44 (11.18)
H-ZCOBG- 12	3/4	0.92 (23.37)	0.50 (12.7 )
H-ZCOBG- 16	1	1.19 (30.23)	0.50 (12.7 )

## BODIES

### Socket Weld Connector

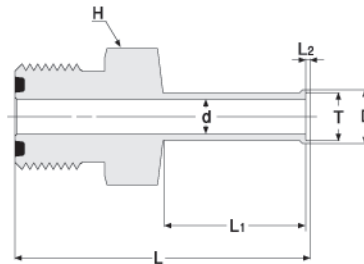
Adapts tubing to ZCO gland.



Part Number	ZCO Size in	T Tube O.D.	D	d	L	L <sub>1</sub>	L <sub>2</sub>	H Hex Flat	Working Pressure	
			in. (mm)						psig	bar
H-ZCOSWC- 2	1/8	1/8"	0.29 (7.37)	0.09 (2.29)	0.88 (22.35)	0.10 (2.54)	0.10 (2.54)	5/8"	12600	860
H-ZCOSWC- 4	1/4	1/4"	0.38 (9.65)	0.18 (4.57)	1.09 (27.69)	0.28 (7.11)	0.31 (7.87)	5/8"	6800	460
H-ZCOSWC- 6	1/2	3/8"	0.60 (15.24)	0.28 (7.11)	1.28 (32.51)	0.31 (7.87)	0.38 (9.65)	15/16"	8100	560
H-ZCOSWC- 8	1/2	1/2"	0.73 (18.50)	0.40 (10.16)	1.34 (34.04)	0.38 (9.65)	0.44 (11.18)	15/16"	3000	200
H-ZCOSWC- 12	3/4	3/4"	0.92 (23.37)	0.62 (15.75)	1.50 (38.10)	0.44 (11.18)	0.50 (12.7 )	1-5/16"	3700	250
H-ZCOSWC- 16	1	1"	1.19 (30.23)	0.87 (22.10)	1.72 (43.69)	0.62 (15.75)	0.69 (17.53)	1-5/8"	3000	200

### Automatic Tube Weld Connector

Adapts tubings to ZCO gland.



Part Number	ZCO Size in	T Tube O.D.	D	d	L	L <sub>1</sub>	L <sub>2</sub>	H Hex Flat	Nominal Wall Thickness	Working Pressure	
			in. (mm)							psig	bar
H-ZCOTWC- 4A	1/4	1/4"	0.29 ( 7.37)	0.18 ( 4.57)	1.59(40.39)	0.75(19.05)	0.02(0.51)	5/8"	0.035"	5100	350
H-ZCOTWC- 6A	1/2	3/8"	0.41(10.41)	0.31( 7.87)	1.74(44.20)	0.75(19.05)	0.03(0.76)	15/16"	0.035"	3300	220
H-ZCOTWC- 8A	1/2	1/2"	0.55(13.97)	0.40(10.16)	1.75(44.45)	0.75(19.05)	0.04(1.02)	15/16"	0.049"	3500	240
H-ZCOTWC-12A	3/4	3/4"	0.80(20.32)	0.65(16.51)	1.78(45.21)	0.75(19.05)	0.04(1.02)	15/16"	0.049"	2200	150
H-ZCOTWC-16A	1	1"	1.06(26.92)	0.87(22.01)	2.03(51.56)	0.96(24.38)	0.04(1.02)	1-5/8"	0.065"	2200	150